

AVIRON VICTORY

USER MANUAL

AVIRON ACTIVE

END BORING WORKOUTS

We're thrilled you've chosen the Aviron Victory Treadmill. For the best experience, please review the instruction manual before use.

Table of Contents

BEFORE STARTING	2
Safety Instructions	2
PRODUCT OVERVIEW AND SPECIFICATIONS	5
Treadmill Dimensions and Specifications	5
Treadmill Parts Details	6
Console Details	7
PARTS AND TOOLS	8
ASSEMBLY INSTRUCTIONS	10
Left Upright Post	10
Right Upright Post	11
Console Base	12
Left Console Cover	14
Right Console Cover	15
Bottle/Phone Holders	16
Console Bracket	17
Console Bracket Cover	18
Console	19
Console Fixing Bracket	20
Console Fixing Bracket Cover	21
Power Cord Bracket	22
CONNECTING TO A NETWORK	23
ACCESSING ADMIN AND SYSTEM SETTINGS	25
SETTING UP YOUR TREADMILL	26
Moving the Treadmill	26
Leveling the Treadmill	27
Adjusting the Console Angle	28
TREADMILL USAGE AND BEST PRACTICES	29
Powering On/Off	29
Stepping On	30
Safety Key	31
Console Controllers	32
CARE AND MAINTENANCE	33
Cleaning the Treadmill	33
Maintenance Schedule (Daily/Weekly/Monthly)	34
Tests and Inspections	35
Centering/Tensioning the Running Belt	36
TERMS AND CONDITIONS	38
WARRANTY AND CERTIFICATIONS	39
STATEMENTS AND NOTICES	40
EXPLODED DIAGRAM & PARTS LIST	43

BEFORE STARTING

Safety Instructions

Please read all instructions before assembling or using the equipment to ensure safety and protection. The owner is responsible for ensuring all users are informed of the warnings and precautions. Use the equipment only as instructed. Improper use may lead to serious injury or death. Aviron is not liable for any damage or injury resulting from misuse.

⚠️ Product Assembly: At least two people are recommended for safely assembling. Do not plug in the treadmill until assembly is fully complete.

Consult Your Physician: Consult your physician before using the equipment. If you feel faint, dizzy, or experience pain, stop and seek medical attention immediately. It's recommended to consult with a fitness professional for proper use of equipment.

Usability and Supervision: Individuals under 16 years of age and those with reduced physical, sensory, or cognitive abilities, that may affect safe usage, should not use the equipment. Users over 16 years old or with limited experience or knowledge must receive proper supervision or instruction before use. Children of any age must not perform maintenance or play with the treadmill.

Stepping On and Off: Exercise caution when stepping on and off the deck. Always keep the deck surface clean and dry. Always ensure the treadmill belt is completely stopped before stepping on or off the equipment. Use the handrails for stability as needed and avoid sudden movements. Step on the footrails before stepping onto the belt and start the treadmill at a slow speed. When stepping off, stop the belt completely and carefully step off onto a stable surface. Never jump off the treadmill while it is in motion.

BEFORE STARTING

Safety Instructions

Avoid Hazards: Avoid wearing loose or dangling clothing while using the treadmill. Keep towels and other loose items away from the belt or any other moving part. Ensure your shoelaces are securely tied and do not extend beyond the soles of your shoes. Do not insert objects or body parts into any of the openings on the equipment or beneath the belt. Do not attempt to service the treadmill beyond the basic maintenance outlined in this manual. All other servicing should be handled by authorized personnel. Never use the treadmill if it is malfunctioning or if the power cord is damaged. Do not attach accessories not recommended or certified by the manufacturer. Do not carry the treadmill by its power cord. Do not use the treadmill in areas where aerosol (spray) products are in use or where oxygen is being administered.

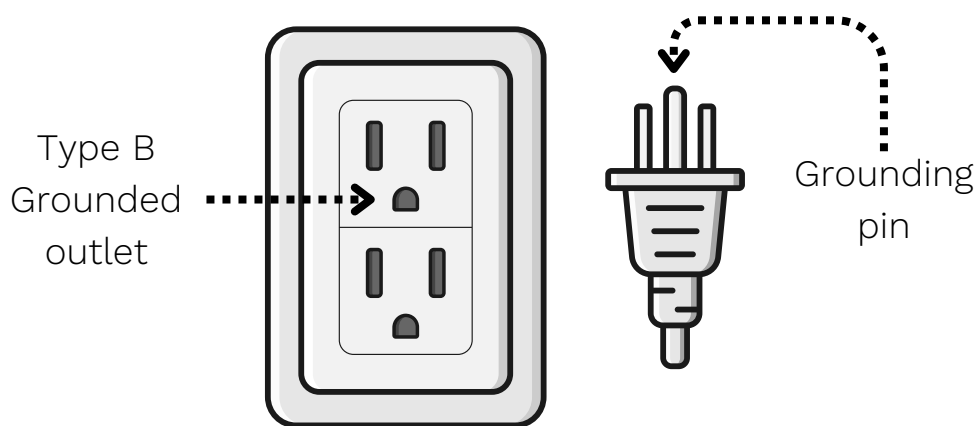
Weight Capacity: The maximum recommended weight capacity for the equipment is 400 lb (181 kg).

Safety Key: Always use the safety key when using the equipment.

BEFORE STARTING

Electrical safety

⚠ Grounded Outlet: To reduce the risk of burns, fire, electric shock, or injury, only plug the equipment into a properly grounded outlet. If the supplied power cord does not fit, contact a qualified electrician to install the correct outlet type, as shown below. Use only a 110V non-GFCI outlet. Never use an adapter or extension cord.



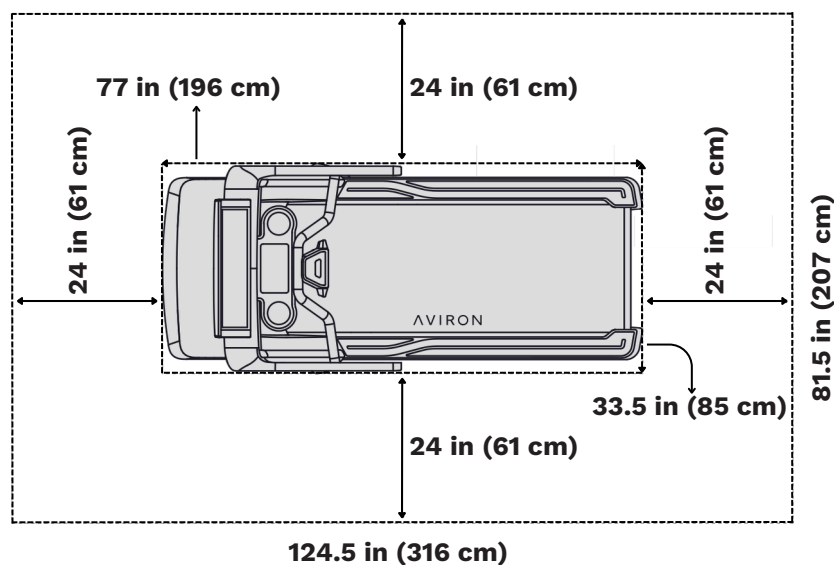
Disconnecting: Always turn off the power and unplug the treadmill before cleaning or when not in use. Avoid soaking or spraying liquids directly on the treadmill. Use a damp cloth for cleaning.

Power Cord: Use only the Airon-supplied power cord to ensure safe and reliable operation. Do not modify the plug. Unauthorized cords can damage the equipment, create safety hazards, and void the warranty. The power cord must never pass under the equipment and must stay away from heat, sharp edges, and water. Ensure the power cord is in good condition before use and contact our technical support for replacements or questions.

BEFORE STARTING

Location

The treadmill is designed for indoor use only. Do not operate or store it outdoors, in high humidity, or in damp or wet conditions. Place and use the treadmill on a stable, level surface in a secure area away from children, pets, and unauthorized users. Ensure there is at least 24 inches (61 cm) of clearance on all four sides. Keep the surrounding area free of furniture, equipment, and other objects.



Warm-up

Warm-up Routine: Warm up for 5 to 10 minutes before exercising to gradually increase heart rate, blood flow, and loosen joints and muscles.

Appropriate Attire: Remove jewelry, including rings, chains, and pins, and always wear suitable clothing and footwear.

PRODUCT OVERVIEW AND SPECIFICATIONS

Treadmill Dimensions and Specifications

Product (L x W x H): 77 x 33.5 x 62.5 in / 196 x 85 x 159 cm

Running Area (L x W): 57 x 20.5 in / 145 x 52 cm

Running Deck Height: 4.5 in / 11.5 cm

Total Weight: 242.5 lb / 110 kg

Operating Temperature Range: 32°F to 104°F / 0°C to 40°C

Storage Temperature Range: 14°F to 140°F / -10°C to 60°C

Power Requirements: 110V, 15 A, non-GFCI power outlet**

Motor Details: DC 3.5 CHP

Speed Range: 0 to 12.5 MPH / 0 to 20 KPH

Speed Increments: 0.1 MPH or KPH (set by user via Admin Settings)

Incline Range: 0 to 12%

Incline Increments: 0.5%

Console Tilt Range: 48° in total

User Height Range: 4 ft 10 in to 6 ft 4 in / 147 to 193 cm

User Maximum Weight: 400 lb / 181 kg

**** Power Requirements:**

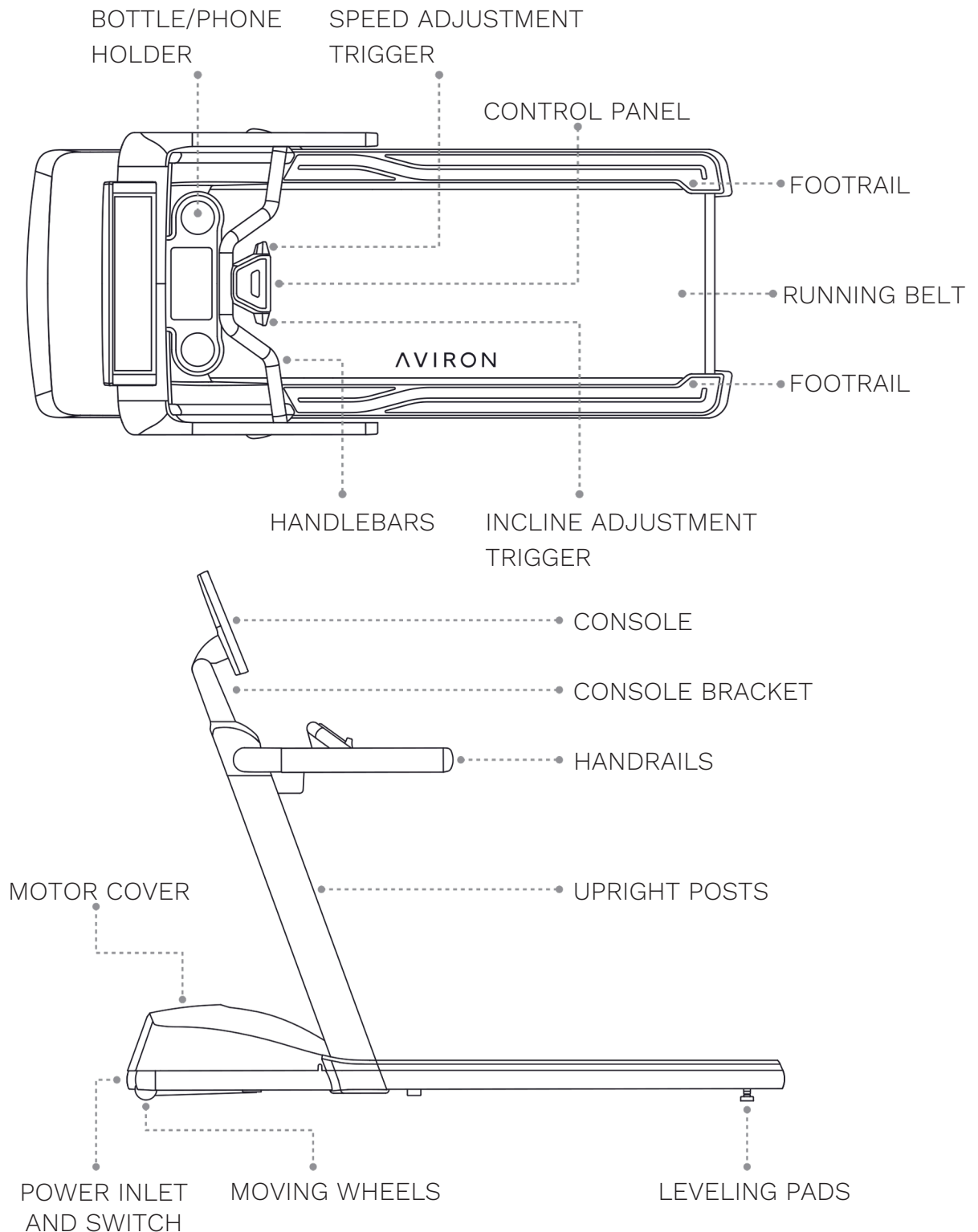
- The treadmill must be plugged directly into a standard power outlet. Avoid using extension cords or power strips.
- For optimal performance and safety, it should be the only device connected to the circuit breaker.
- Do not use GFCI outlets, as they may cause operational issues.

Recommended Space Requirement

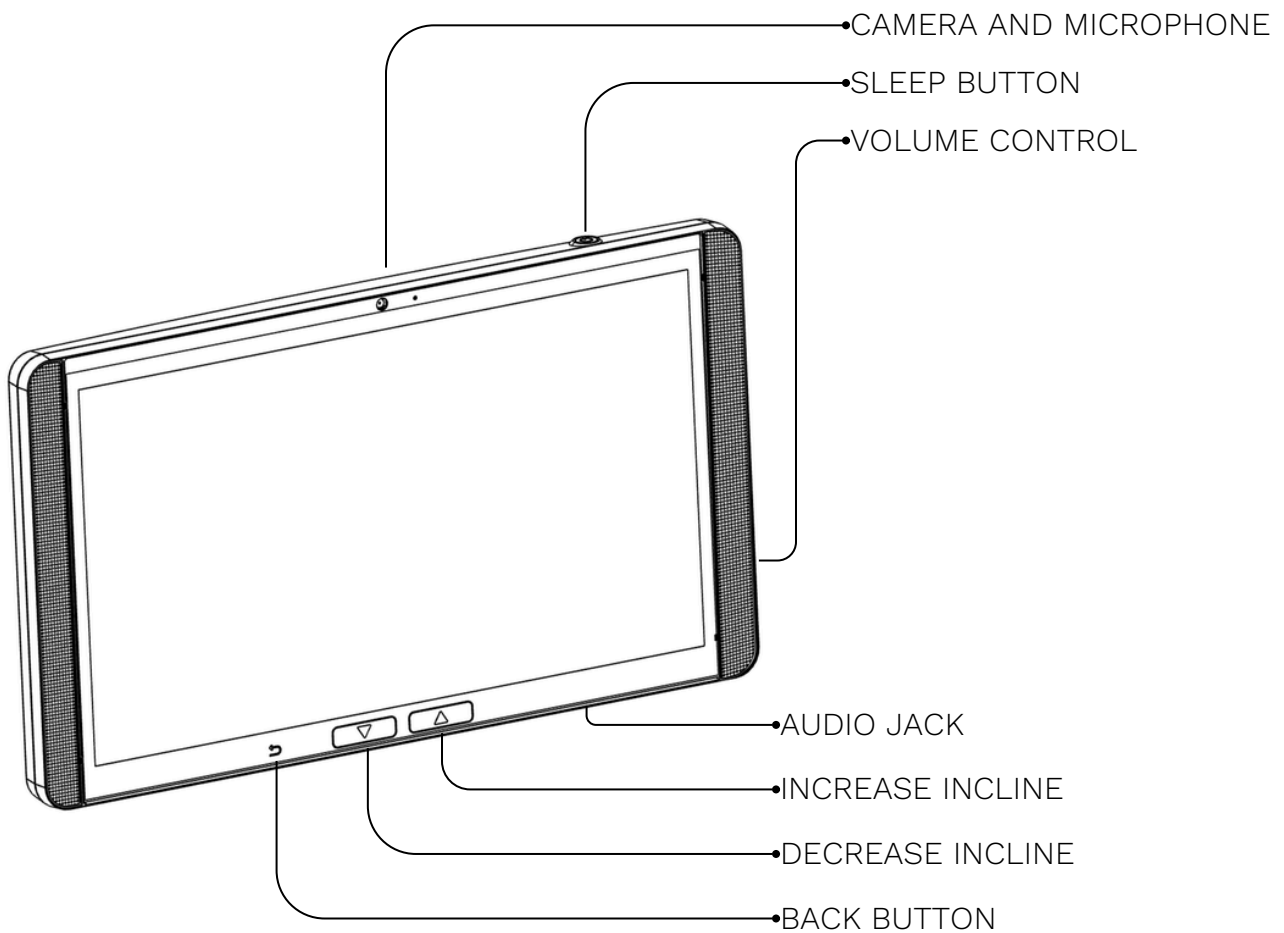
Dimensions (L x W): 124.5 x 81.5 in / 317 x 207 cm

PRODUCT OVERVIEW AND SPECIFICATIONS

Treadmill Parts Details



Console Details



ETHERNET PORT LOCATED AT REAR

LCD: 21.5" 1080P Touchscreen @ 60Hz

RAM Memory: 8GB LPDDR4

Storage: 32GB eMMC flash

OS: Android

Wi-Fi: 802.11 b/g/n/ac

Ethernet: 10/100/1000 Mbps

Bluetooth: 5.2

Camera: 2.0 MP

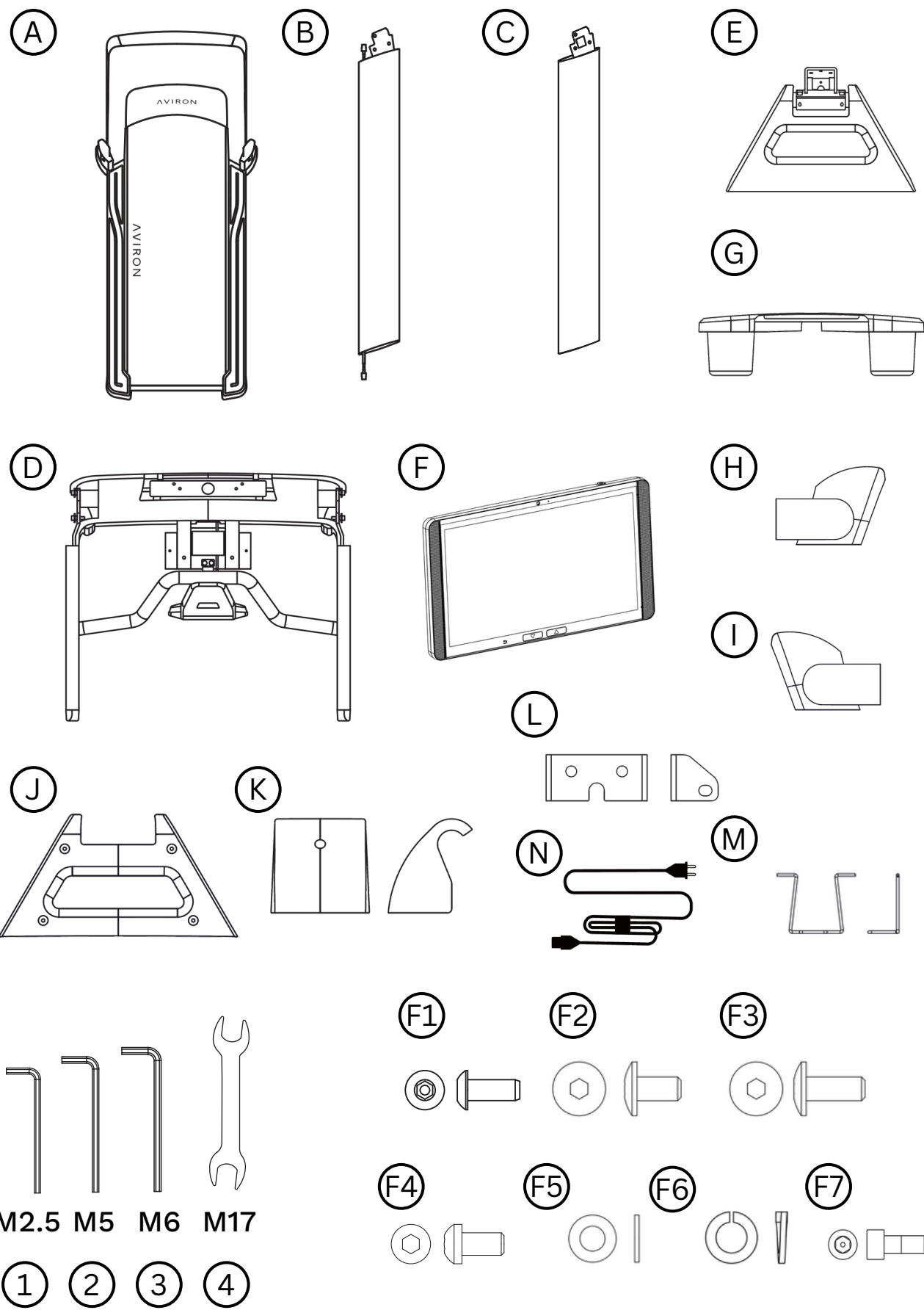
Speakers: 2 x 10 watt

Certifications: FCC, CE, IC, and Google GMS

PARTS AND TOOLS

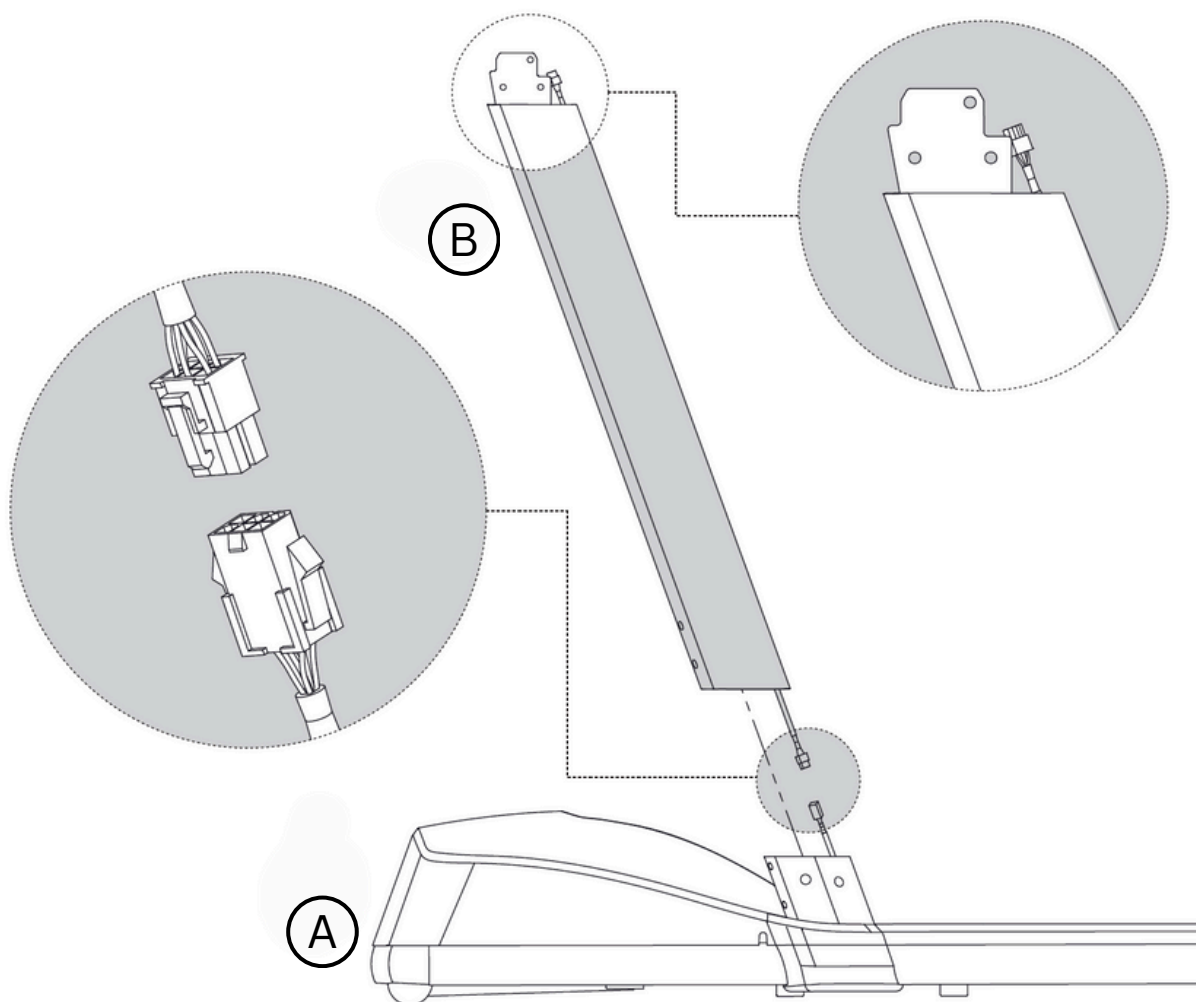
PARTS	A	MAIN FRAME	1
	B	LEFT UPRIGHT POST (W/ CABLE)	1
	C	RIGHT UPRIGHT POST	1
	D	CONSOLE BASE	1
	E	CONSOLE BRACKET	1
	F	CONSOLE	1
	G	BOTTLE/PHONE HOLDER	1
	H	RIGHT CONSOLE COVER	1
	I	LEFT CONSOLE COVER	1
	J	CONSOLE BRACKET COVER	1
	K	CONSOLE BRACKET TOP COVER	1
	L	CONSOLE FIXING BRACKET	1
	M	POWER CABLE BRACKET	1
	N	POWER CABLE	1
TOOLS	1	ALLEN KEY M2.5	1
	2	ALLEN KEY M5	1
	3	ALLEN KEY M6	1
	4	M17 OPEN-END WRENCH	1
FASTENERS	F1	BUTTON HEAD HEX SCREW M4 X 10MM	9
	F2	BUTTON HEAD HEX SCREW M8 X 15MM	8
	F3	BUTTON HEAD HEX SCREW M8 X 20MM	6
	F4	DOME HEAD HEX SCREW M8 X 15MM	8
	F5	FLAT WASHER M8 X 1.6T	22
	F6	LOCK WASHER M8 X 1.5T	22
	F7	SOCKET HEAD CAP BOLT M6 X 10MM	1

PARTS AND TOOLS



ASSEMBLY INSTRUCTIONS

Step 1 (A)



Parts:

(A) (B)

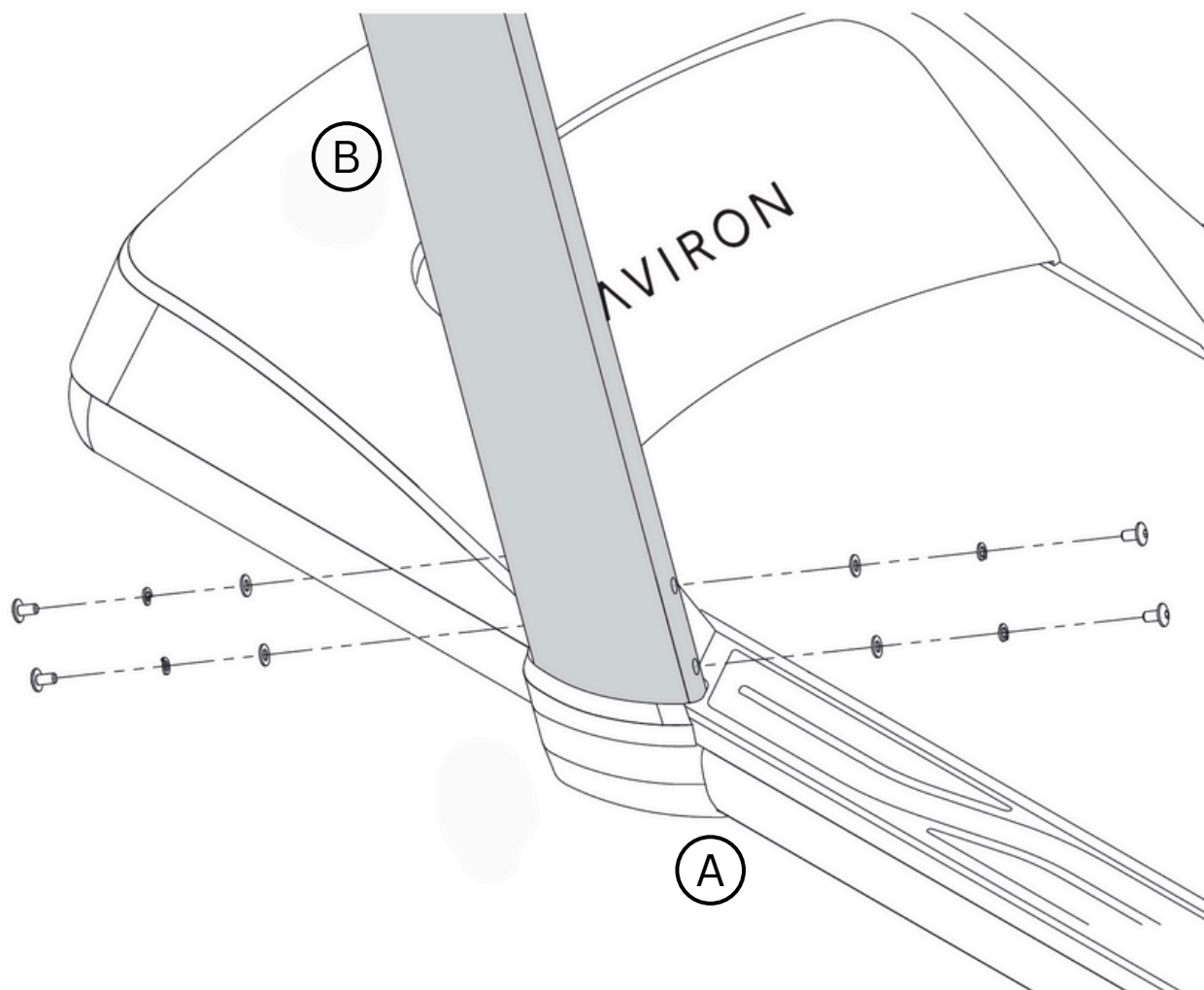
Tools:

Fasteners:

Place the Main Frame (A) on the ground as shown. Bring the Left Upright Post (B) close to the frame and connect the internal wires. Ensure the wires are properly adjusted inside the post groove to prevent pinching.

ASSEMBLY INSTRUCTIONS

Step 1 (B)



Parts:

(A) (B)

Tools:

(3)

Fasteners:

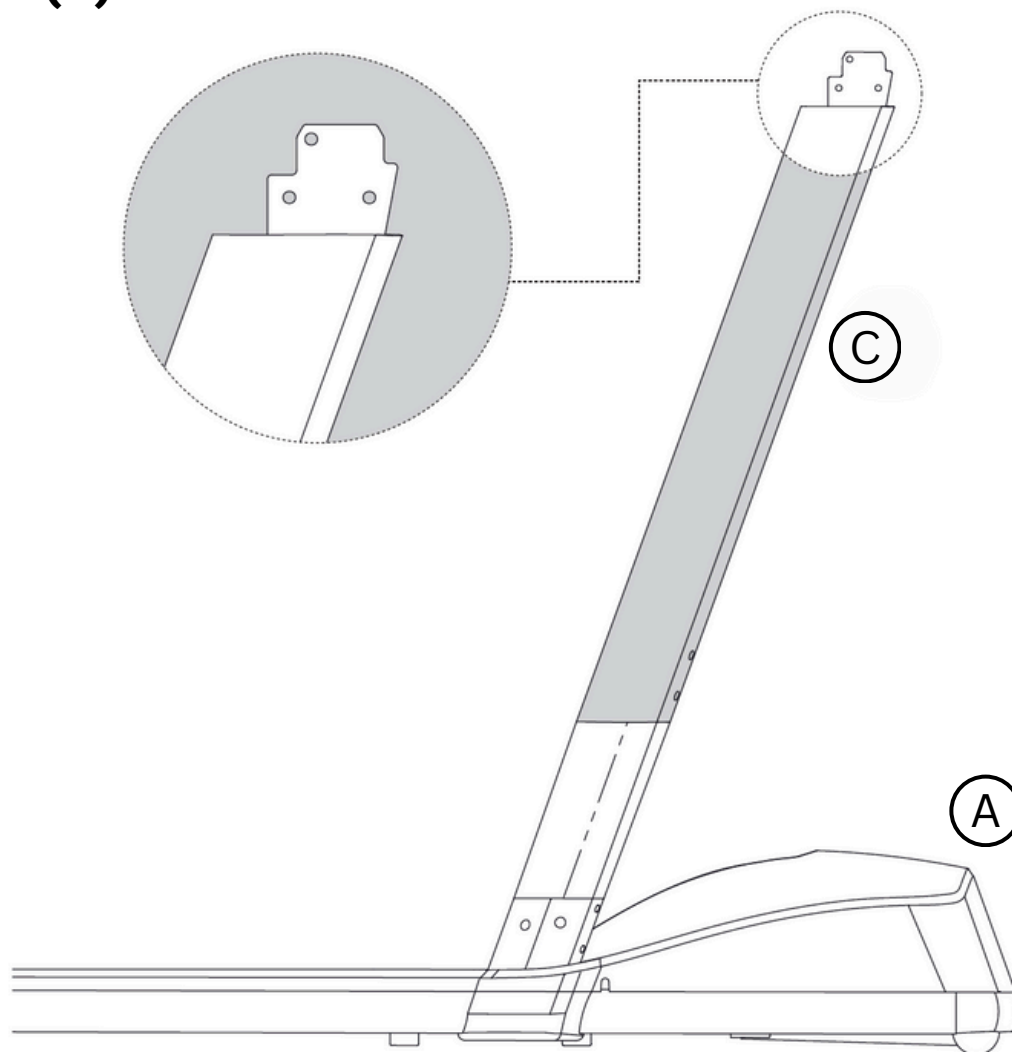
(F2) (F5) (F6)

Slide the post onto the frame bracket and secure it with 4x washers (F5), 4x lock washers (F6) and 4x M8 screws (F2) using the M6 Allen Key.

NOTE: Start by loosely fastening the screws, then tighten them evenly in an X-pattern to ensure the strain is properly distributed.

ASSEMBLY INSTRUCTIONS

Step 2 (A)



Parts:

(A) (C)

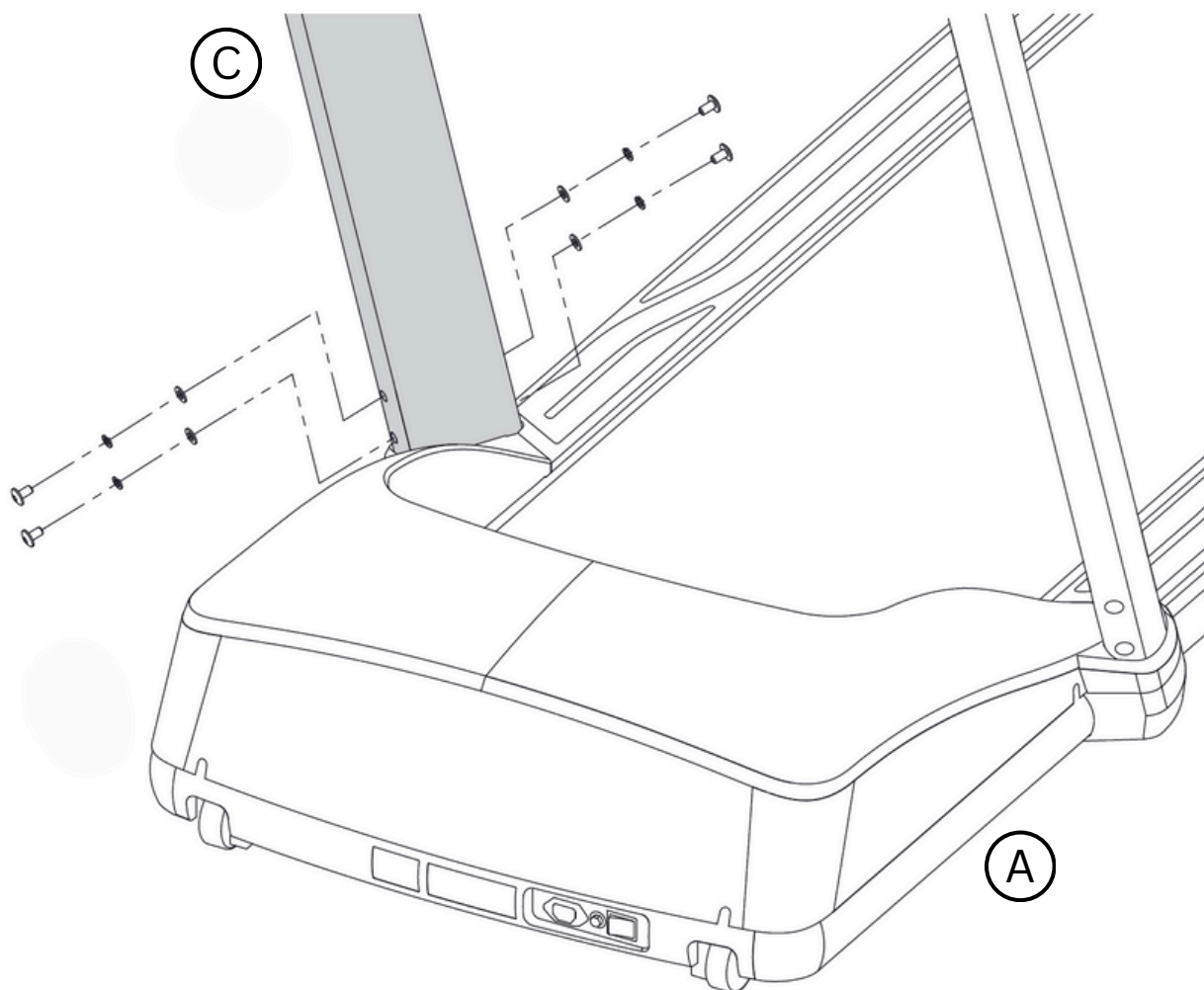
Tools:

Fasteners:

Position the Right Upright Post (C) on top of the Main Frame (A), slide the post onto the frame bracket.

ASSEMBLY INSTRUCTIONS

Step 2 (B)



Parts:

(A) (C)

Tools:

(3)

Fasteners:

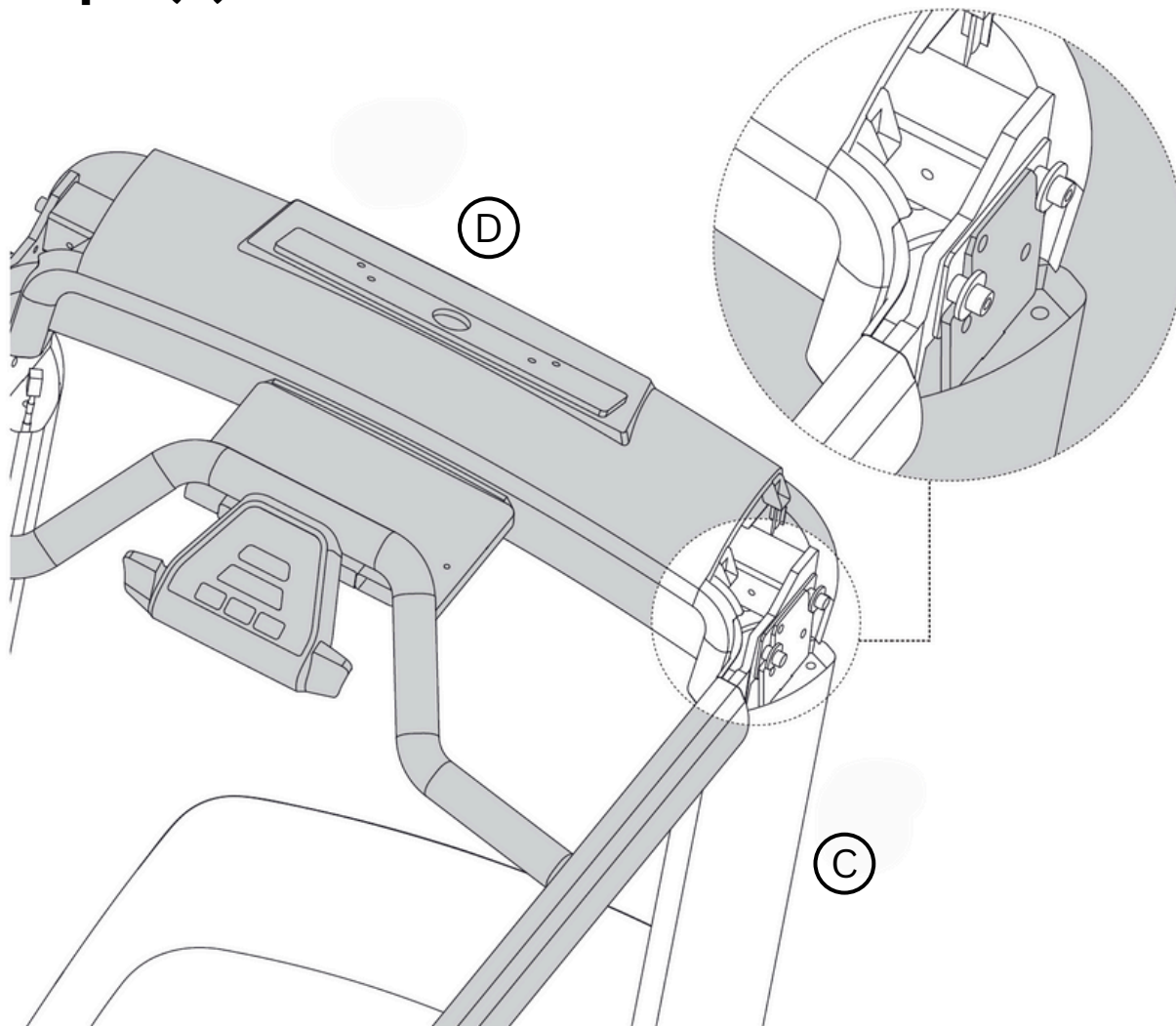
(F2) (F5) (F6)

Secure the assembly with 4x washers (F5), 4x lock washers (F6) and 4x M8 screws (F2) using the M6 Allen Key.

NOTE: Start by loosely fastening the screws, then tighten them evenly in an X-pattern to ensure the strain is properly distributed.

ASSEMBLY INSTRUCTIONS

Step 3 (A)



Parts:

(C) (D)

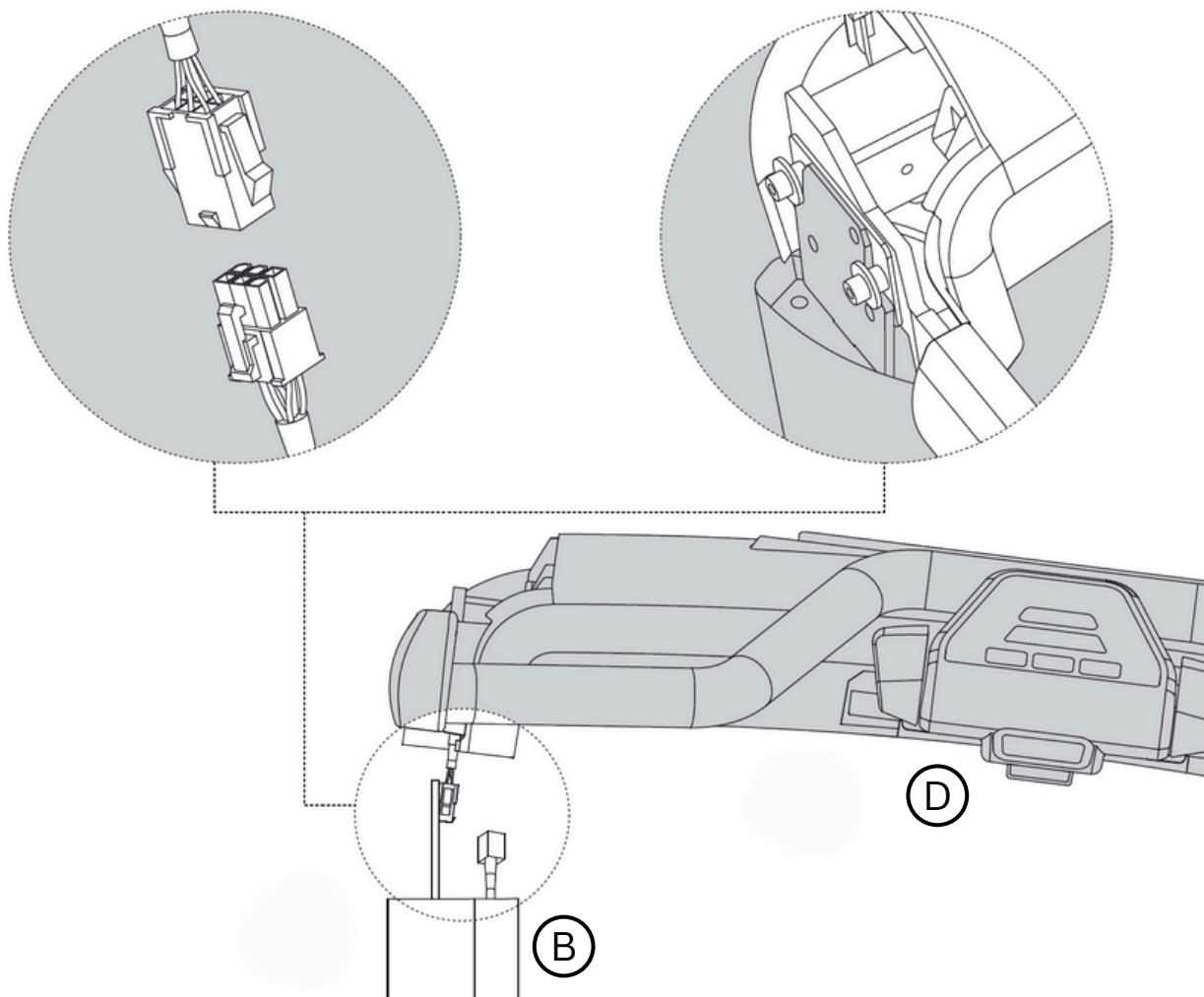
Tools:

Fasteners:

Position the Console Base (D) on top of the Right Upright Post (C) as shown.

ASSEMBLY INSTRUCTIONS

Step 3 (B)



Parts:

(B) (D)

Tools:

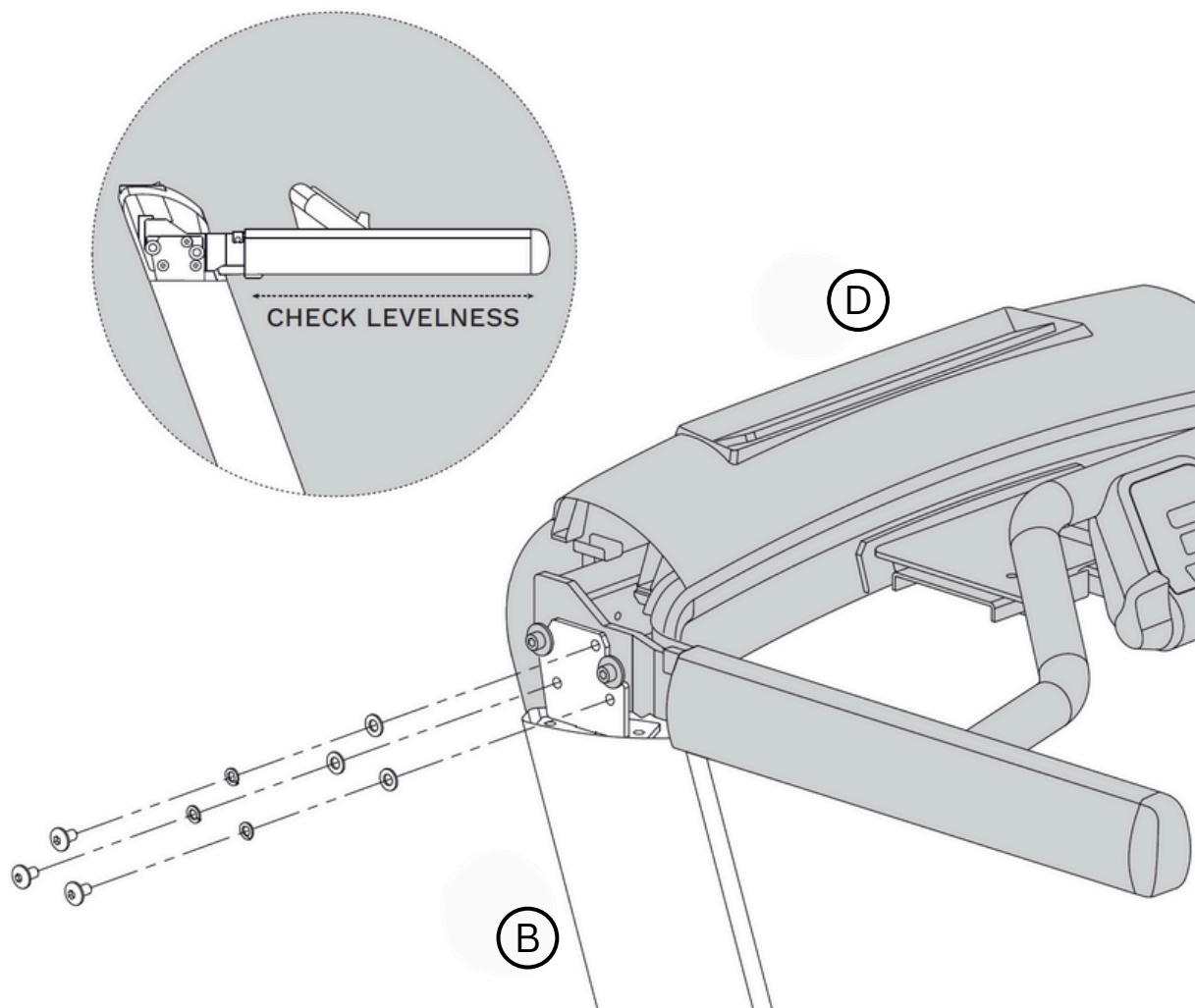
Fasteners:

Position the Console Base (D) on top of the Left Upright Post (B) and connect the internal wires. Ensure the wires are properly adjusted inside the post groove to prevent pinching.

NOTE: When the Upright Post is standing alone, it may lean slightly inward. To make assembly easier, gently pull the upright posts outward to align them properly.

ASSEMBLY INSTRUCTIONS

Step 4 (A)



Parts:

(B) (D)

Tools:

(3)

Fasteners:

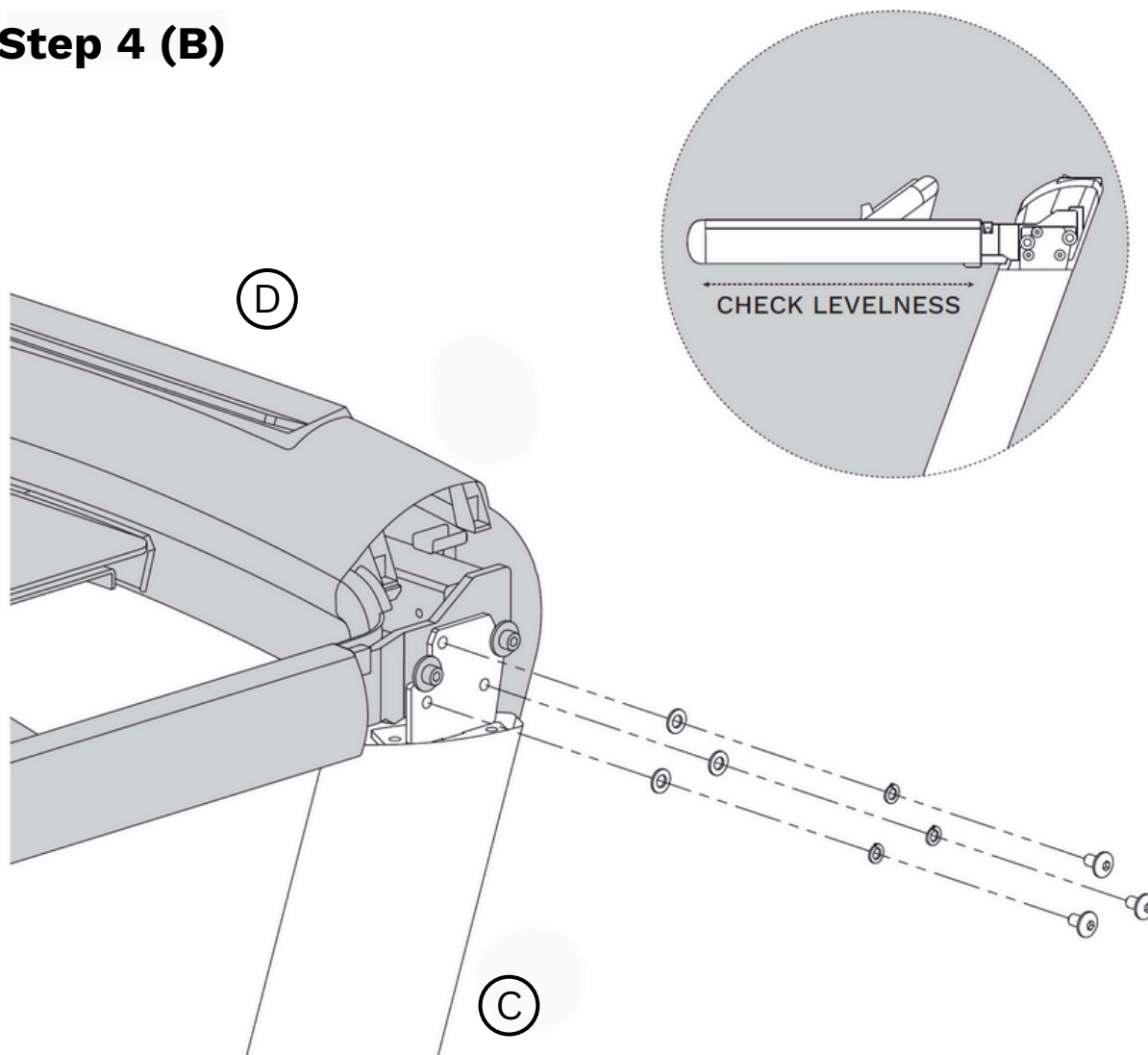
(F3) (F5) (F6)

Ensure the handrails are leveled, then secure the assembly with secure it with 3x washers (F5), 3x lock washers (F6) and 3x M8 screws (F3) using the M6 Allen Key.

NOTE: Start by loosely fastening the screws, then tighten them evenly to ensure the strain is properly distributed.

ASSEMBLY INSTRUCTIONS

Step 4 (B)



Parts:

(C) (D)

Tools:

(3)

Fasteners:

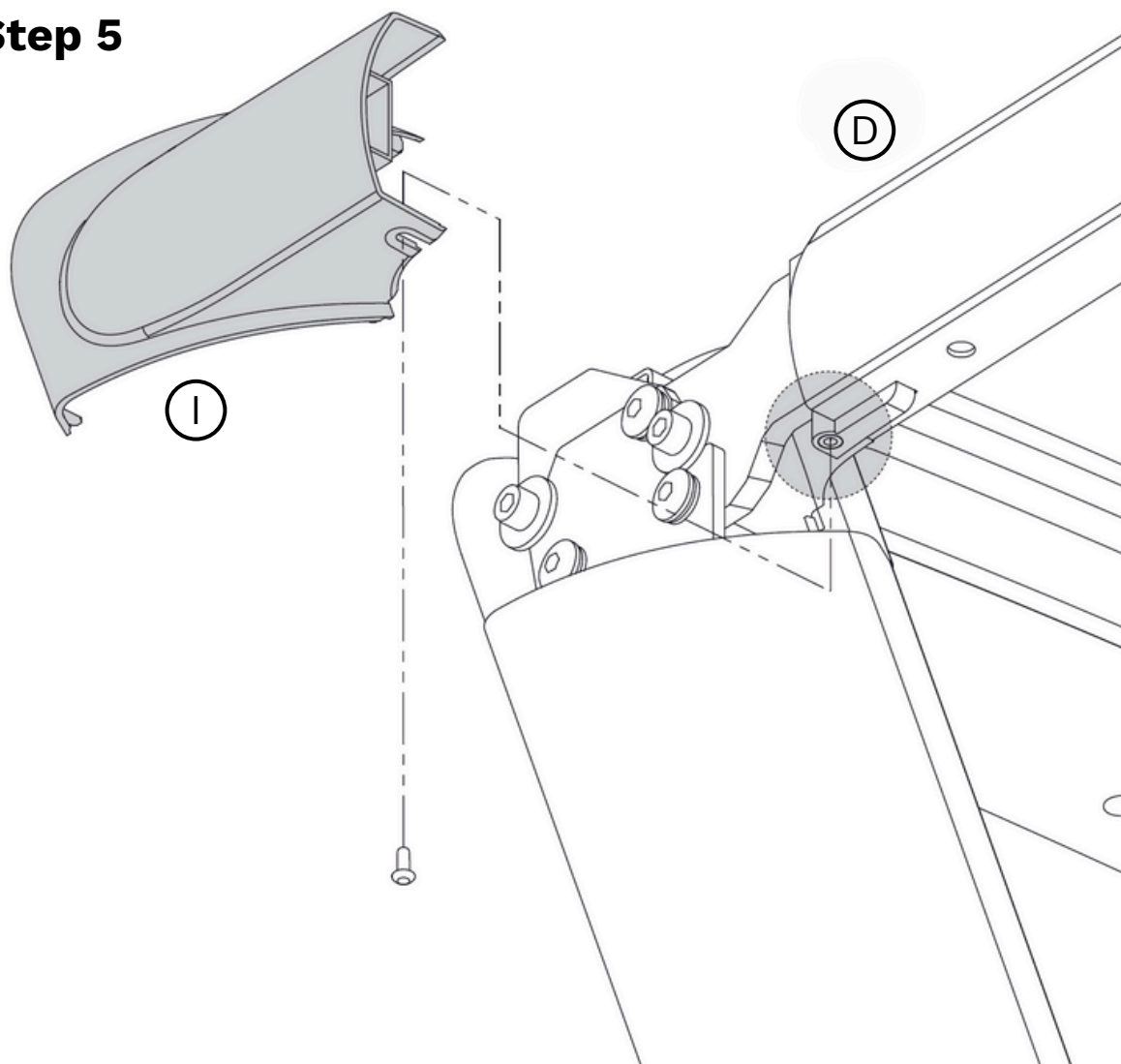
(F3) (F5) (F6)

Ensure the handrails are leveled, then secure the assembly with secure it with 3x washers (F5), 3x lock washers (F6) and 3x M8 screws (F3) using the M6 Allen Key.

NOTE: Start by loosely fastening the screws, then tighten them evenly to ensure the strain is properly distributed.

ASSEMBLY INSTRUCTIONS

Step 5



Parts:

(D) (I)

Tools:

(1)

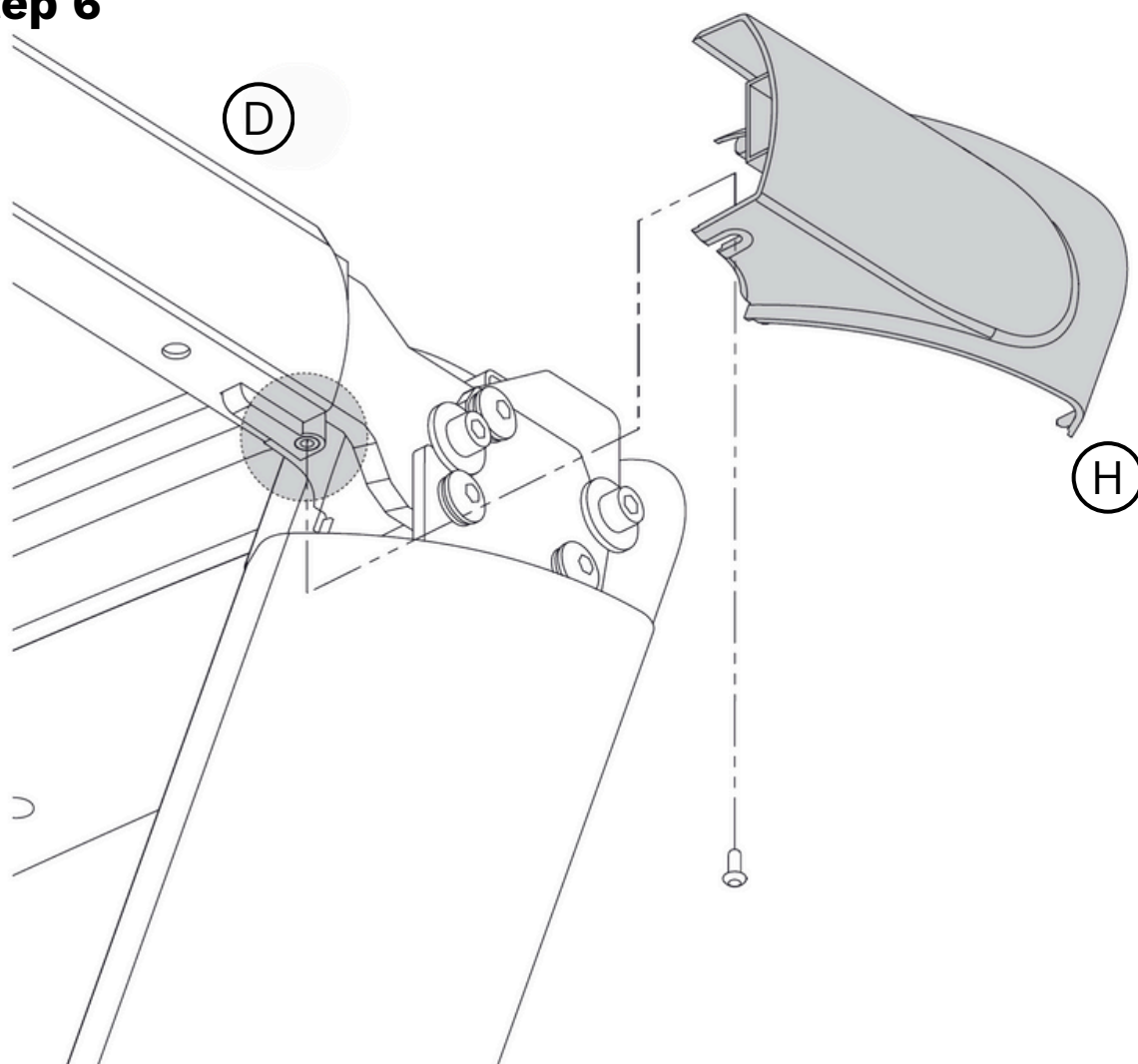
Fasteners:

(F1)

Position the Left Console Cover (I) on the left side of the Console Base (D) by lightly pressing down on the top of the Console Cover to engage the plastic locks and create a smooth, seamless connection, then secure the assembly with 1x M4 screw (F1) using the M2.5 Allen Key.

ASSEMBLY INSTRUCTIONS

Step 6



Parts:

(D) (H)

Tools:

(1)

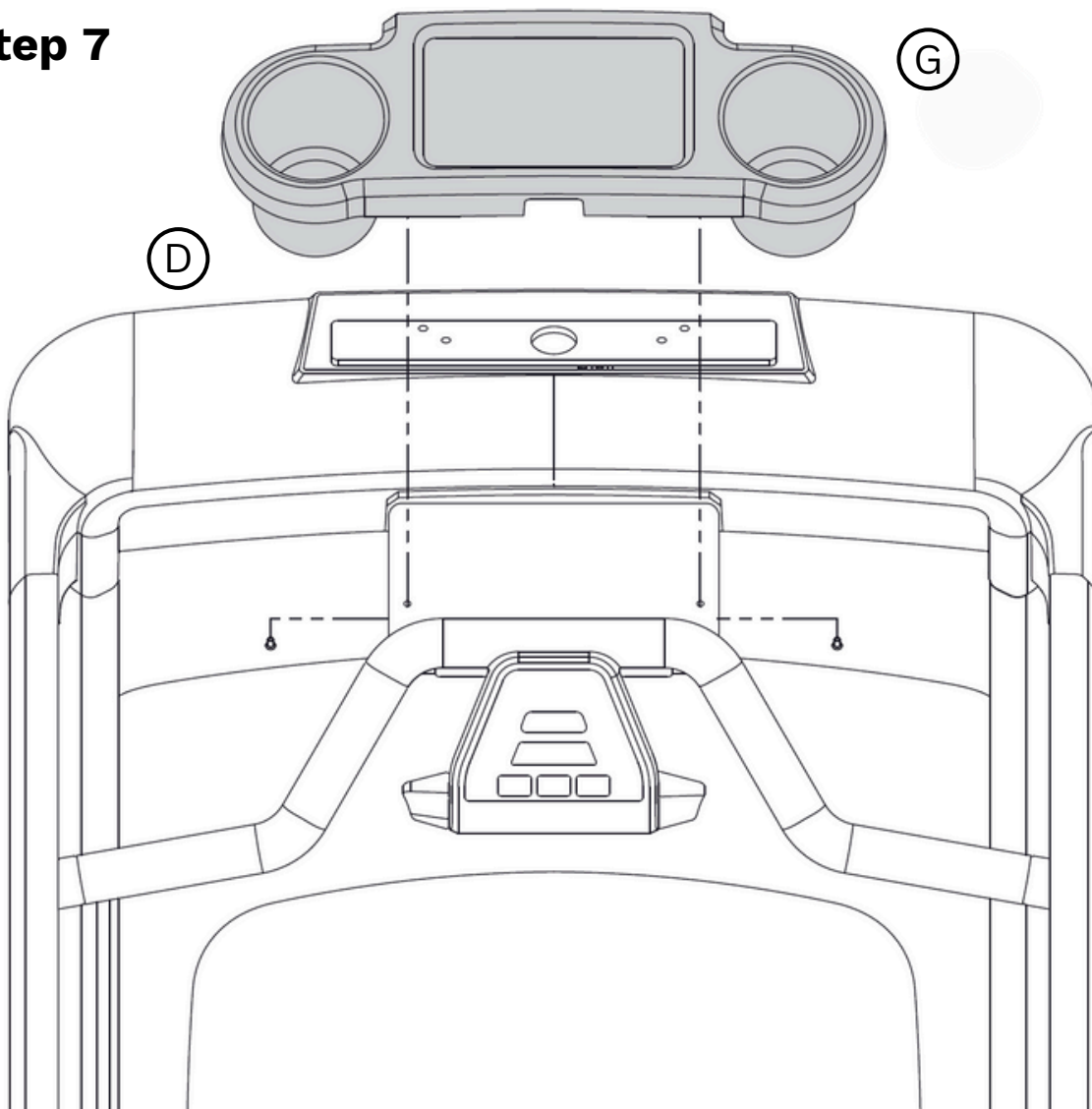
Fasteners:

(F1)

Position the Right Console Cover (H) on the right side of the Console Base (D) by lightly pressing down on the top of the Console Cover to engage the plastic locks and create a smooth, seamless connection, then secure the assembly with 1x M4 screw (F1) using the M2.5 Allen Key.

ASSEMBLY INSTRUCTIONS

Step 7



Parts:

(D) (G)

Tools:

(1)

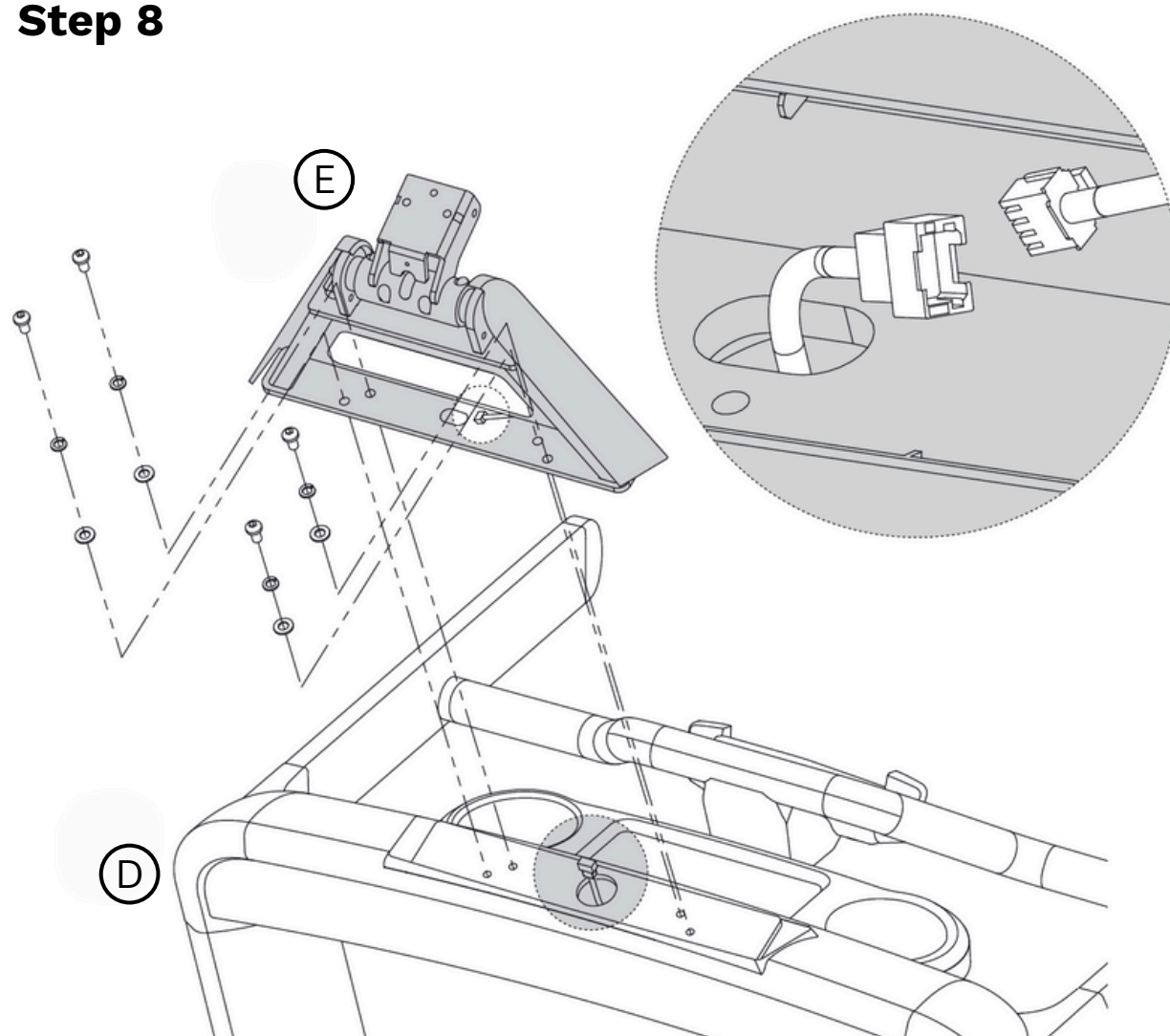
Fasteners:

(F1)

Position the Bottle/Phone Holder (G) on top of the Console Base (D) and secure the assembly with 2x M4 screws (F1) using the M2.5 Allen Key.

ASSEMBLY INSTRUCTIONS

Step 8



Parts:

(D) (E)

Tools:

(3)

Fasteners:

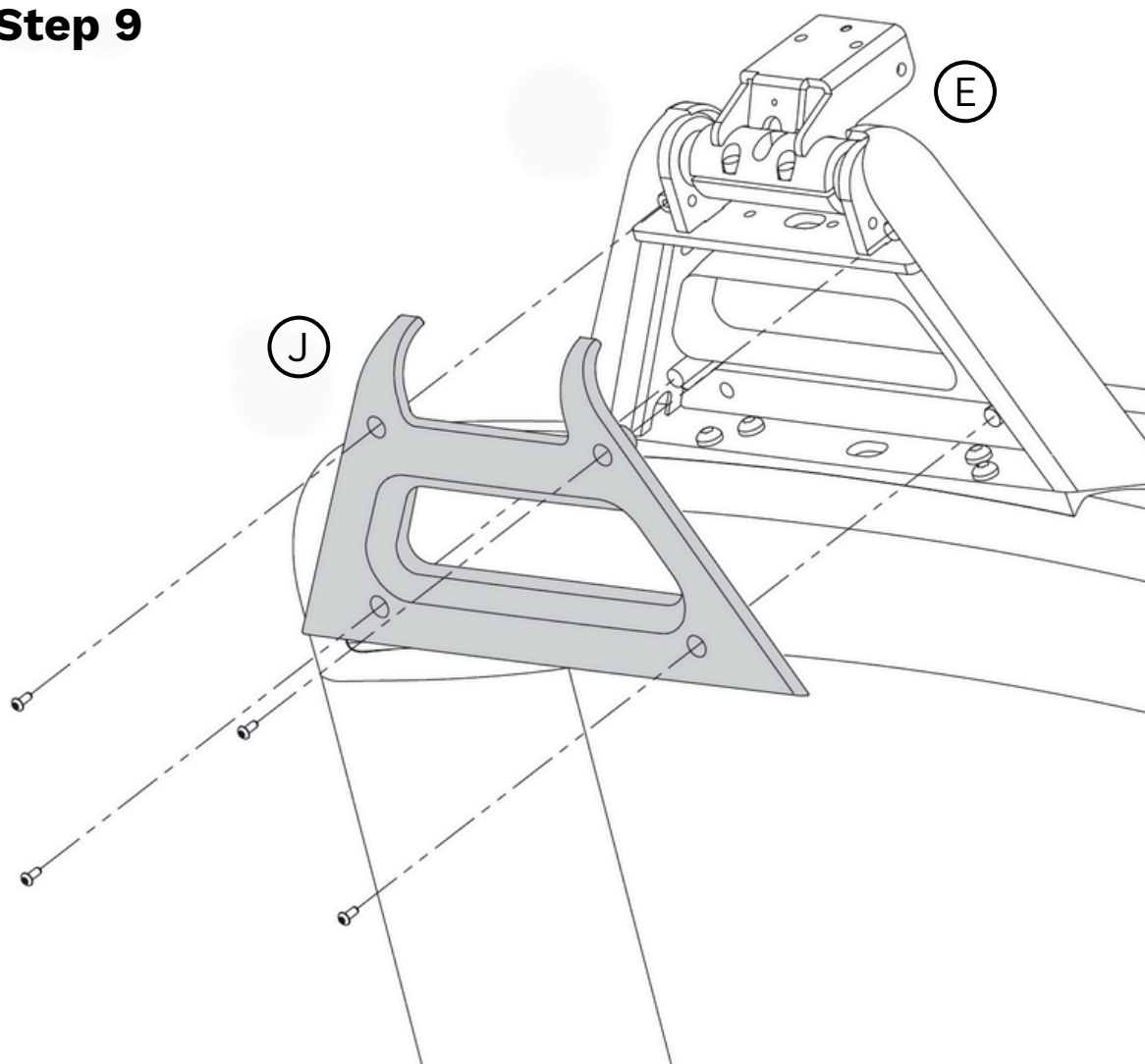
(F4) (F5) (F6)

Position the Console Bracket (E) on top of the Console Base (D) and connect the internal wires. Ensure the wires are properly adjusted inside the console groove to prevent pinching. Align the bracket with the console and secure it with 4x washers (F5), 4x lock washers (F6) and 4x M8 screws (F4) using the M6 Allen Key.

NOTE: Start by loosely fastening the screws, then tighten them evenly in an X-pattern to ensure the strain is properly distributed.

ASSEMBLY INSTRUCTIONS

Step 9



Parts:

(E) (J)

Tools:

(1)

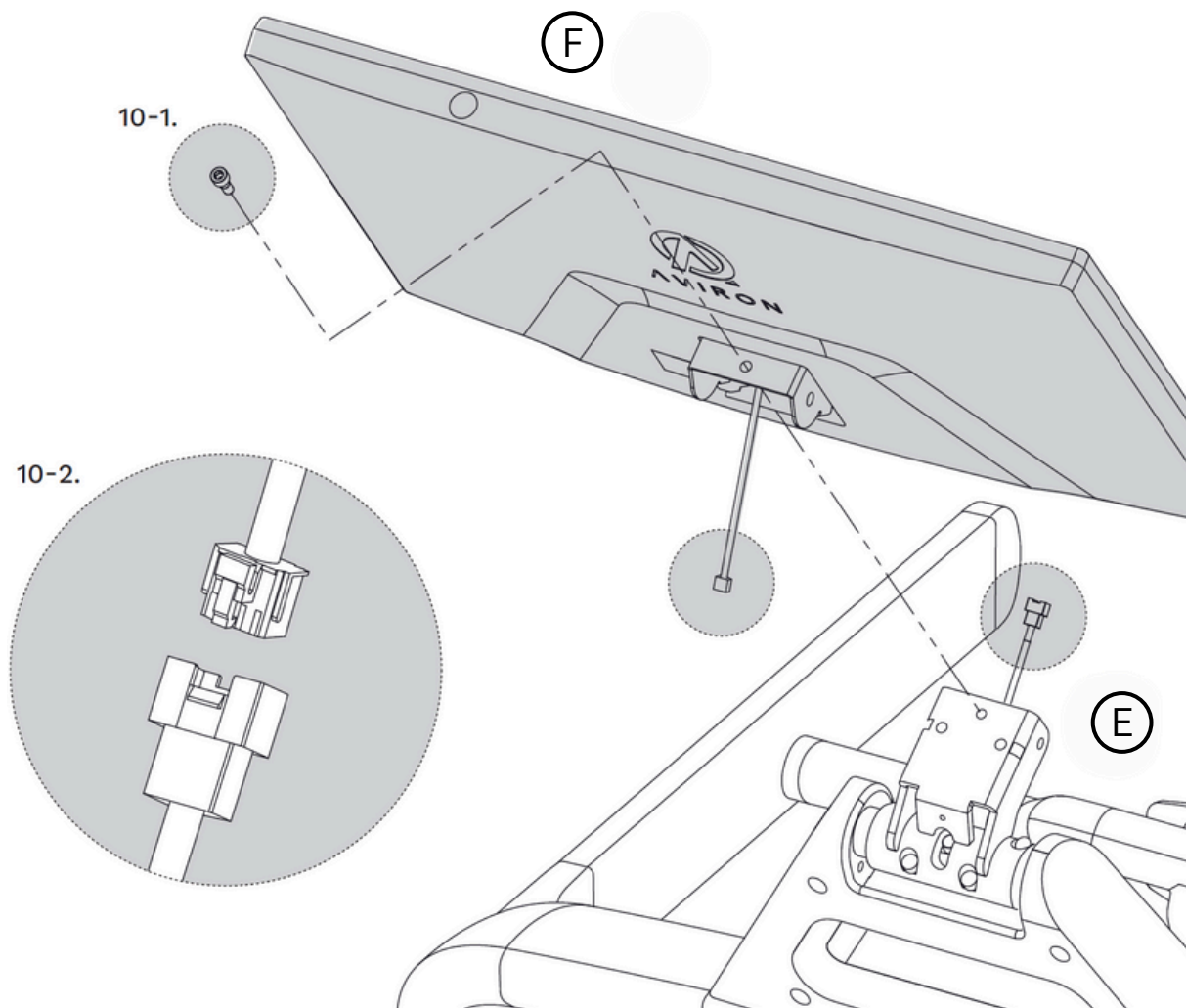
Fasteners:

(F1)

Position the Console Bracket Cover (J) at the back of the Console Bracket (E) and secure it with 4x M4 screws (F1) using the M2.5 Allen Key.

ASSEMBLY INSTRUCTIONS

Step 10



Parts:



Tools:



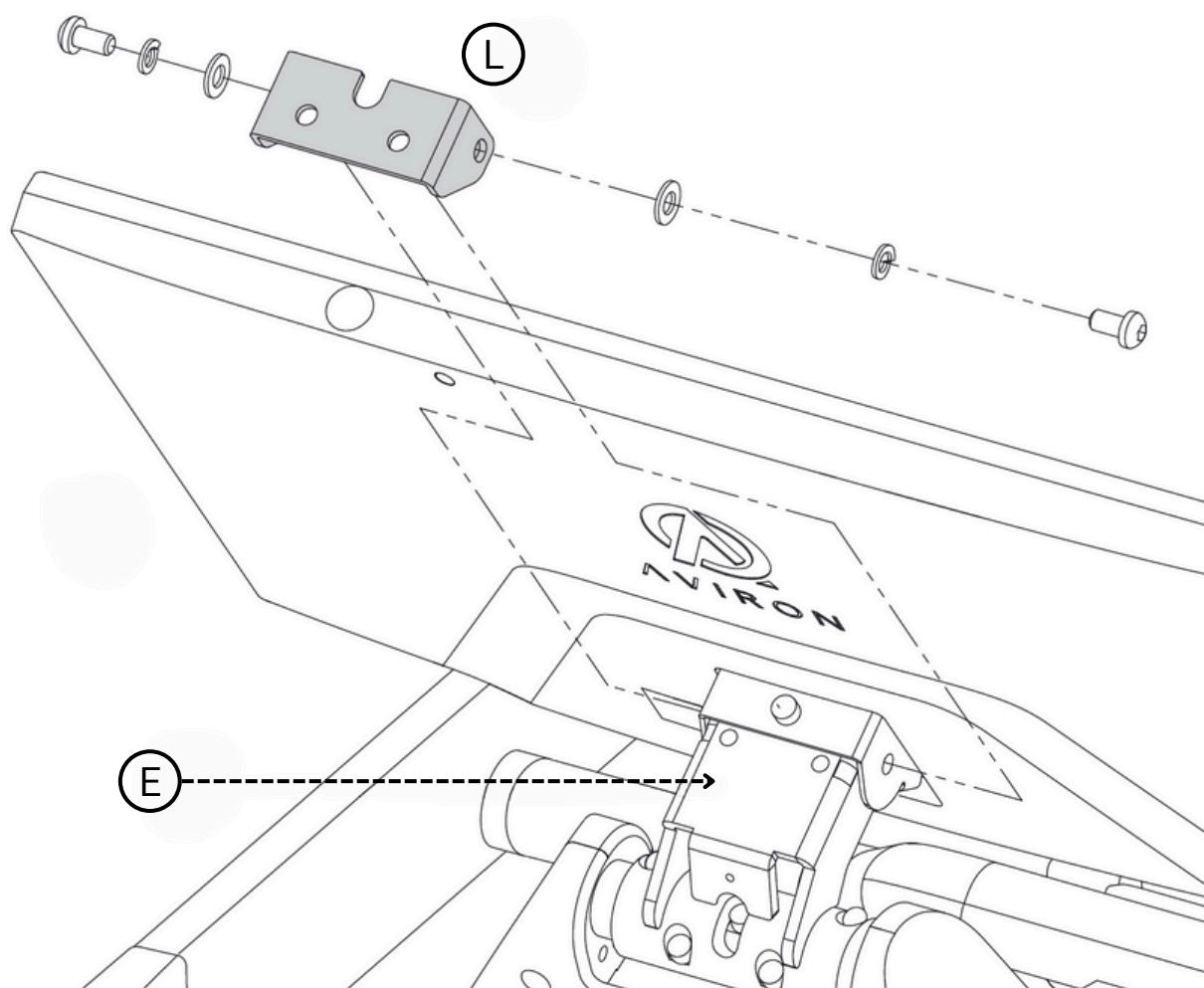
Fasteners:



Set the Console (F) onto the Console Bracket (E) and secure it with 1x M6 screw (F7) using the M5 Allen Key. Connect the internal wires ensuring the wires are properly adjusted inside the bracket groove to prevent pinching.

ASSEMBLY INSTRUCTIONS

Step 11 (A)



Parts:

(E) (L)

Tools:

(3)

Fasteners:

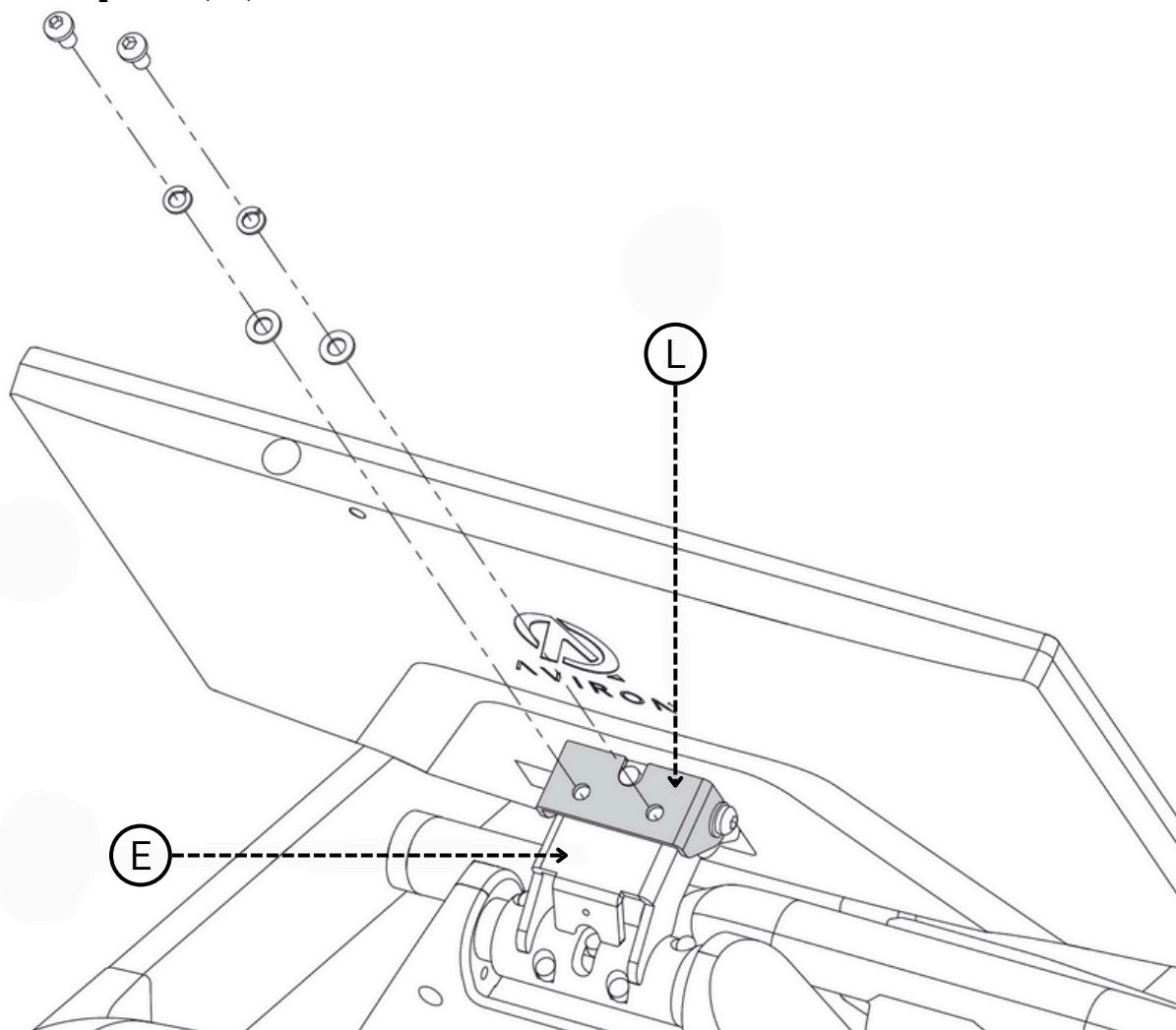
(F4) (F5) (F6)

Position the Console Fixing Bracket (L) over the Console Bracket (E), align all the holes, and secure it with 2x washers (F5), 2x lock washers (F6) and 2x M8 screws (F4) using the M6 Allen Key.

NOTE: For easier assembly, start by tightening all screws halfway, beginning with the side screws before moving on to the top ones. Once all screws are in place, tighten them fully.

ASSEMBLY INSTRUCTIONS

Step 11 (B)



Parts:

(E) (L)

Tools:

(3)

Fasteners:

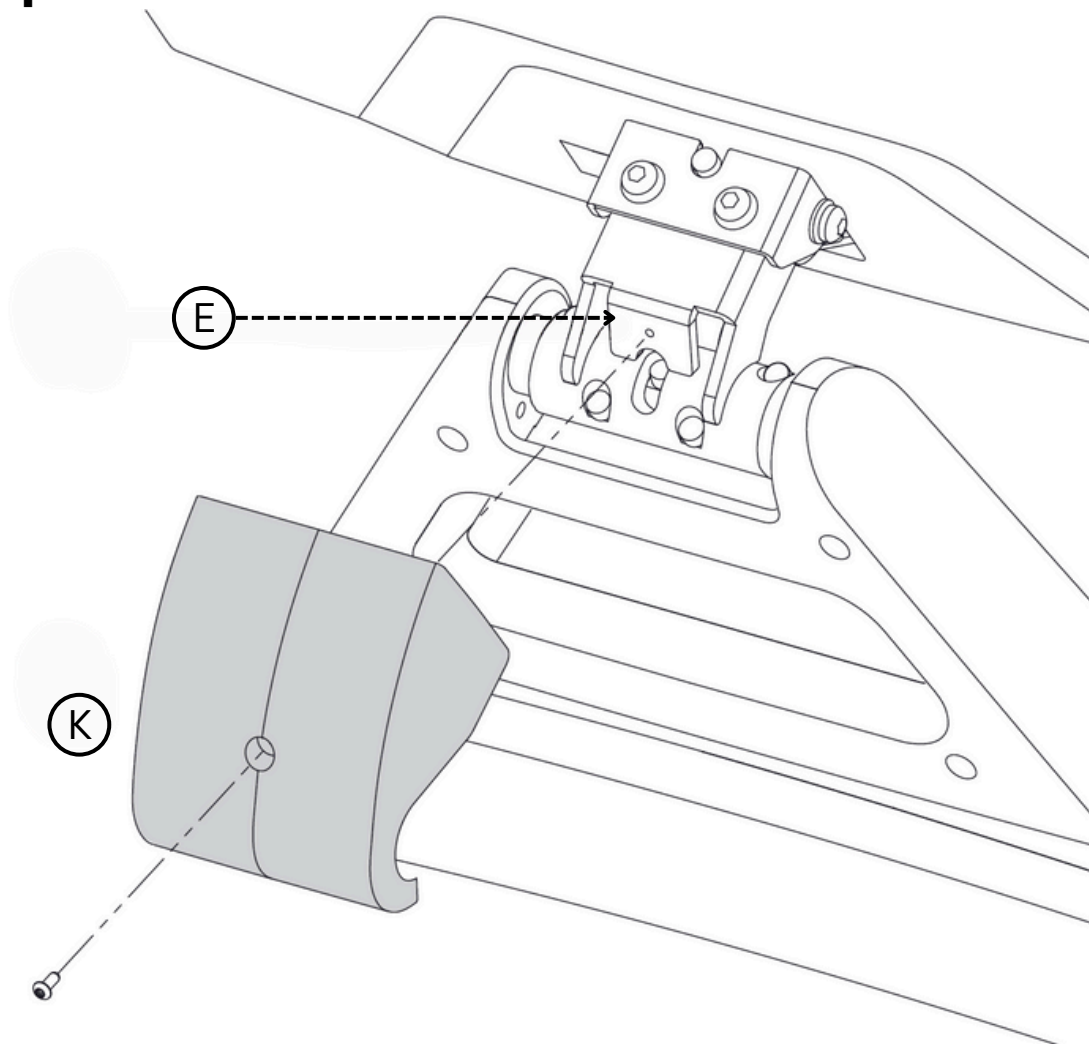
(F4) (F5) (F6)

Finish securing the assembly with 2x washers (F5), 2x lock washers (F6) and 2x M8 screws (F4) using the M6 Allen Key.

NOTE: For easier assembly, start by tightening all screws halfway, beginning with the side screws before moving on to the top ones. Once all screws are in place, tighten them fully.

ASSEMBLY INSTRUCTIONS

Step 12



Parts:

(E) (K)

Tools:

(1)

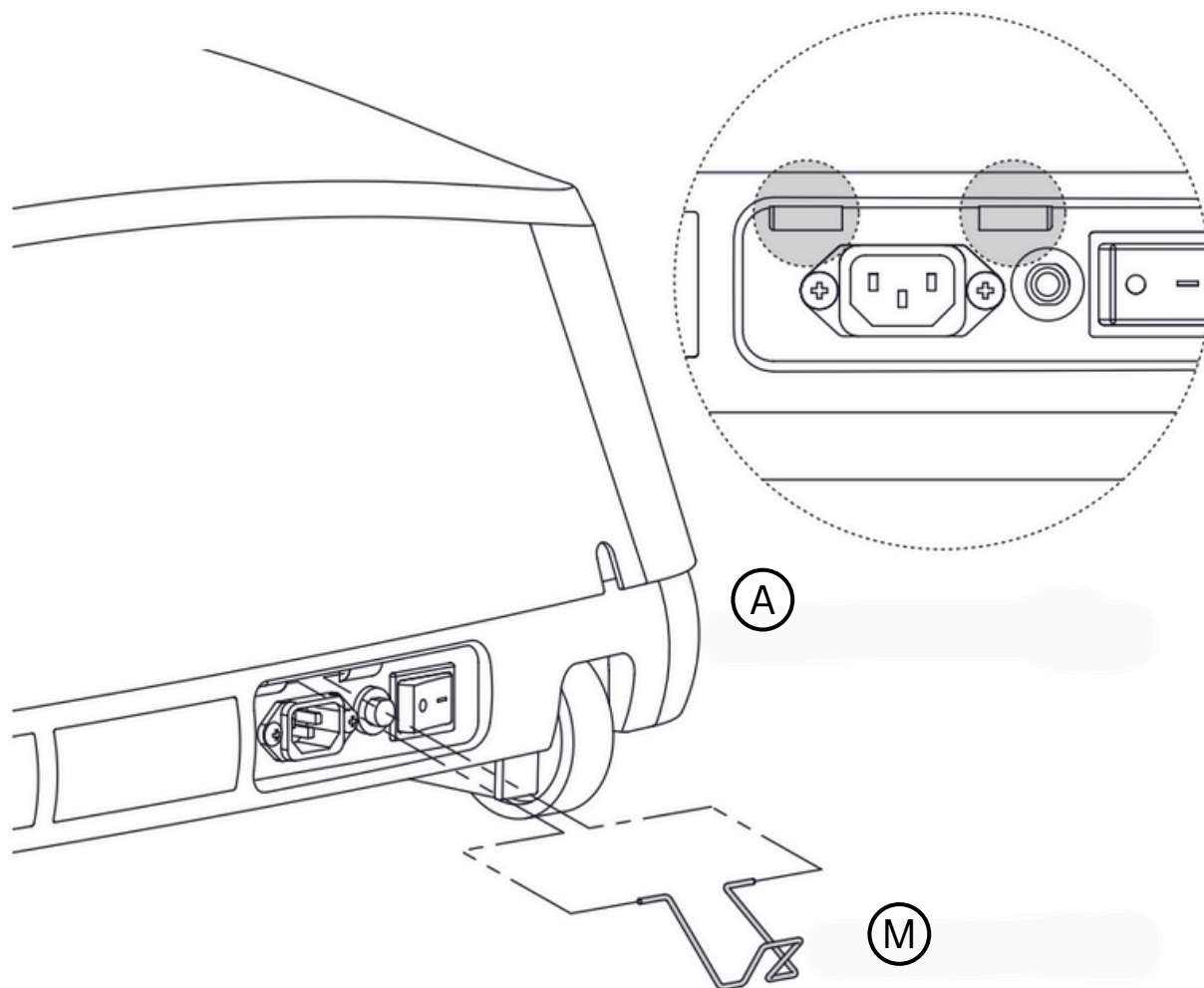
Fasteners:

(F1)

Position the Console Bracket Top Cover (K) over the Console Bracket (E) and secure it with 1x M4 screw (F1) using the M2.5 Allen Key.

ASSEMBLY INSTRUCTIONS

Step 13



Parts:

(A) (M)

Tools:

Fasteners:

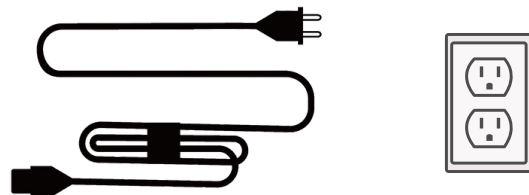
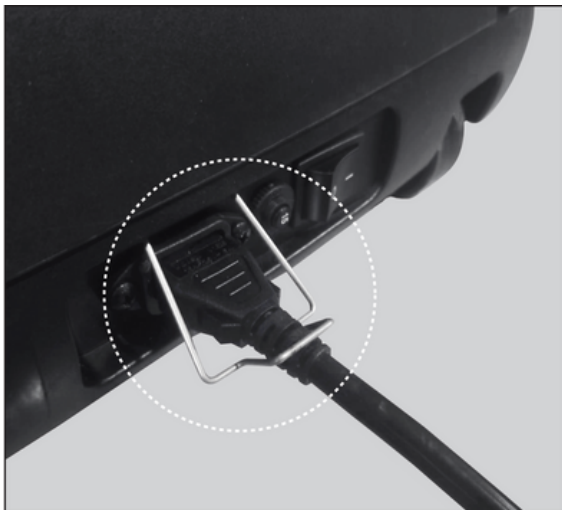
Hold the Power Cord Bracket (M) with the curve facing upward, lightly squeeze it by the open ends, and insert it into the groove at the front of the Main Frame (A).

CONNECTING TO A NETWORK

Once the treadmill is assembled, you can connect to your network by plugging an Ethernet cable into the port located at the rear of the console, or you can follow the instructions below for Wi-Fi connection.

Note: For commercial memberships, follow the instructions on "Accessing Admin and System Settings" to log in as an admin and access the system settings.

1. Connect the treadmill to the power cable via the power plug. The console will power on automatically.



2. Select the gear icon located at the bottom left of the screen.

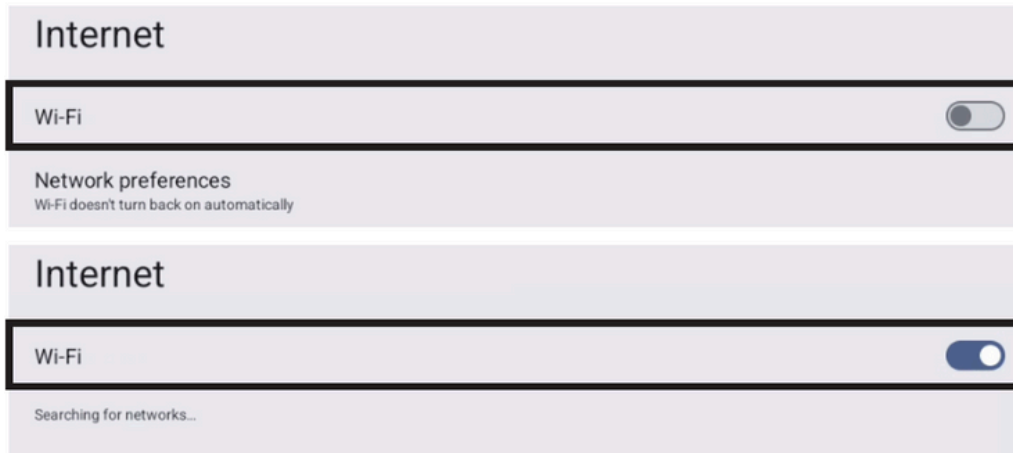


3. Select "WIFI SETTINGS".



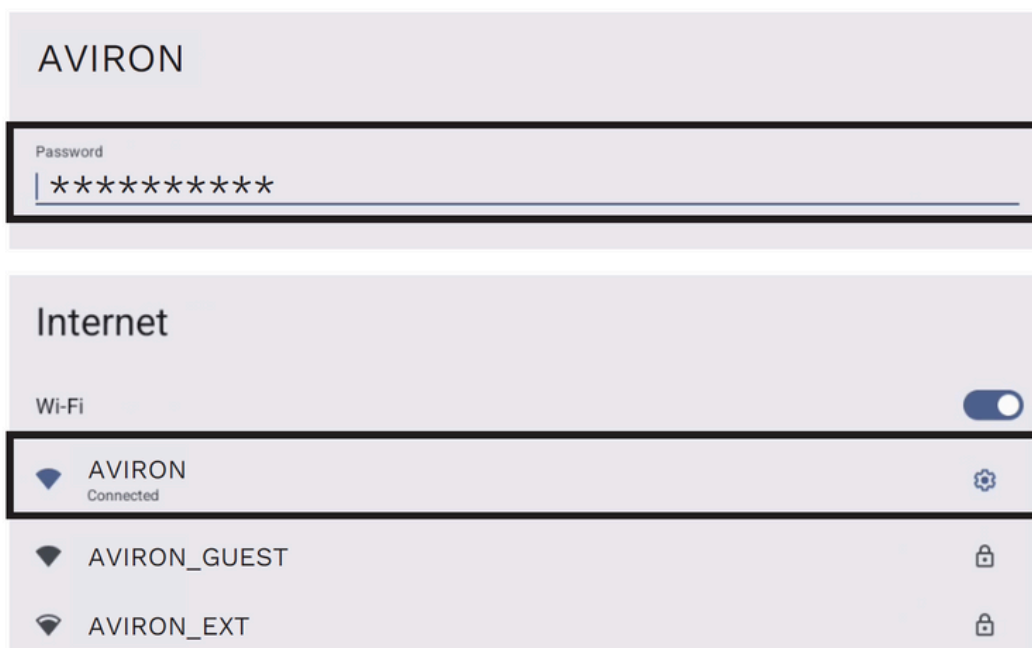
CONNECTING TO A NETWORK

4. Enable Wi-Fi by switching the toggle icon at the right to the “ON” position.



5. Select your preferred network and enter the password.

NOTE: To connect to a hidden network, click "Add network," enter the network name and password, then select "Advanced options." Scroll to the bottom and under "Hidden network," select "Yes."



ACCESSING ADMIN AND SYSTEM SETTINGS

NOTE:

Only applicable with the Commercial membership (for commercial use).

1. Select “Add Profile” on the login screen.
2. Select the “Sign In” option.



3. Enter “admin” as the Email address.
4. Enter the Machine ID as the password.

NOTE: The Machine ID information can be found in three places:

- a. On a white sticker found underneath the console.
- b. On a white sticker found on the console original box.
- c. At the “Account Information” page.
 - Login with ‘Guest’.
 - Tap the gear icon at the bottom left corner.



- Tap “Account Information” on the menu.

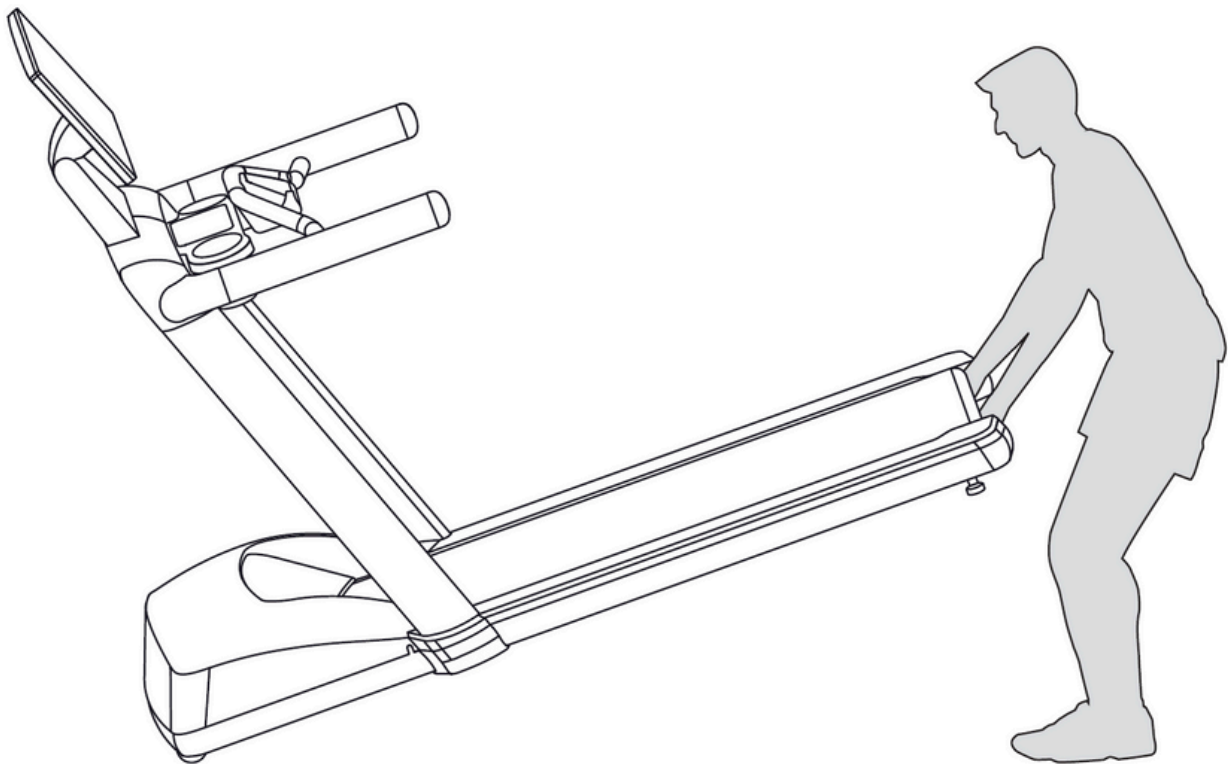


5. Tap the “Sign In” button
6. Once logged in, tap the gear icon at the bottom left of the screen.

SETTING UP YOUR TREADMILL

Moving the Treadmill

1. Power off and disconnect the power cable from the power outlet first then from the treadmill.
2. Lightly lift the deck by the metal bar located underneath it.
3. If clearance permits, tilt the treadmill forward.
 - a. Be careful not to hit the console against walls while tilting the equipment forward.
4. Slowly and carefully roll the equipment to the desired location.

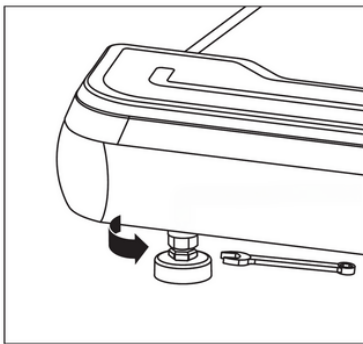


SETTING UP YOUR TREADMILL

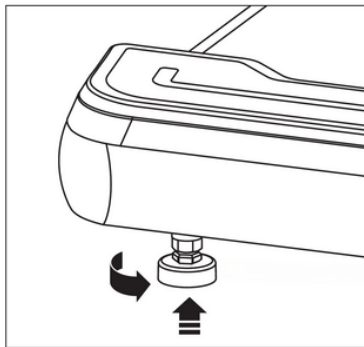
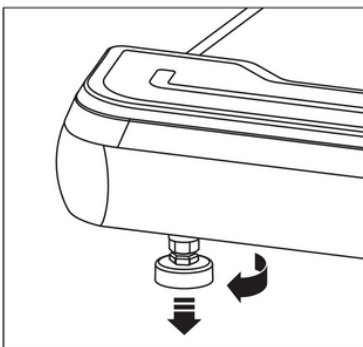
Leveling

Only operate the Aviron Victory Treadmill on a level surface. If the equipment has been moved, rocks, or wobbles, adjust the rubber pads beneath the deck's rear portion as instructed below:

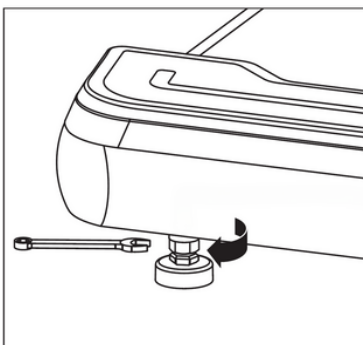
- 1.** Use the M17 Open-end Wrench to loosen the lock nuts located on top of the rubber pads.



- 2.** Adjust the pads by turning the rubber pad counterclockwise to increase height and clockwise to decrease it.



- 3.** Use the M17 Open-end Wrench to tighten the lock nuts located on top of the rubber pads.



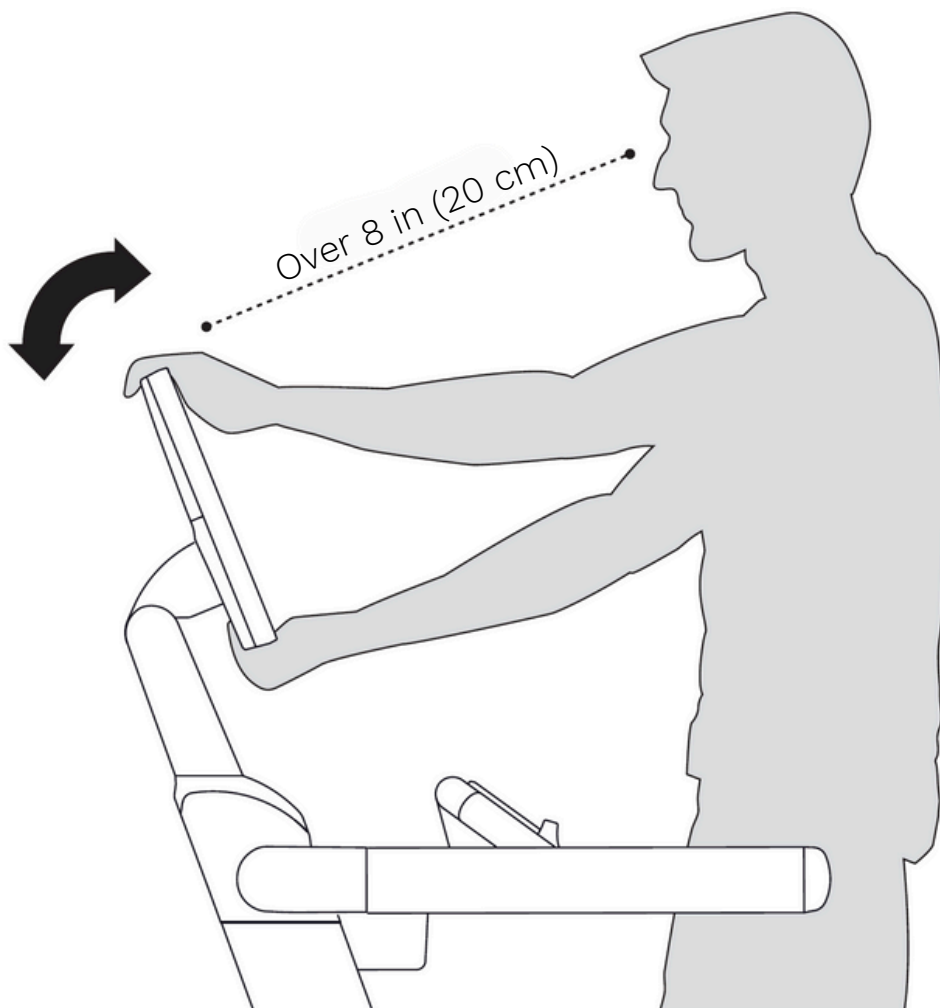
SETTING UP YOUR TREADMILL

Adjusting the Console Angle

Holding the top and bottom of the console, tilt it back or forward to find your most comfortable view angle. You should be able to look at the console comfortably from the center of the running deck.

NOTE: To ensure compliance with electromagnetic safety standards, please maintain a distance of at least 8 inches (20 cm) from the console.

⚠ CAUTION: To avoid damages to the console or support bracket, do not attempt any horizontal movements with the console.



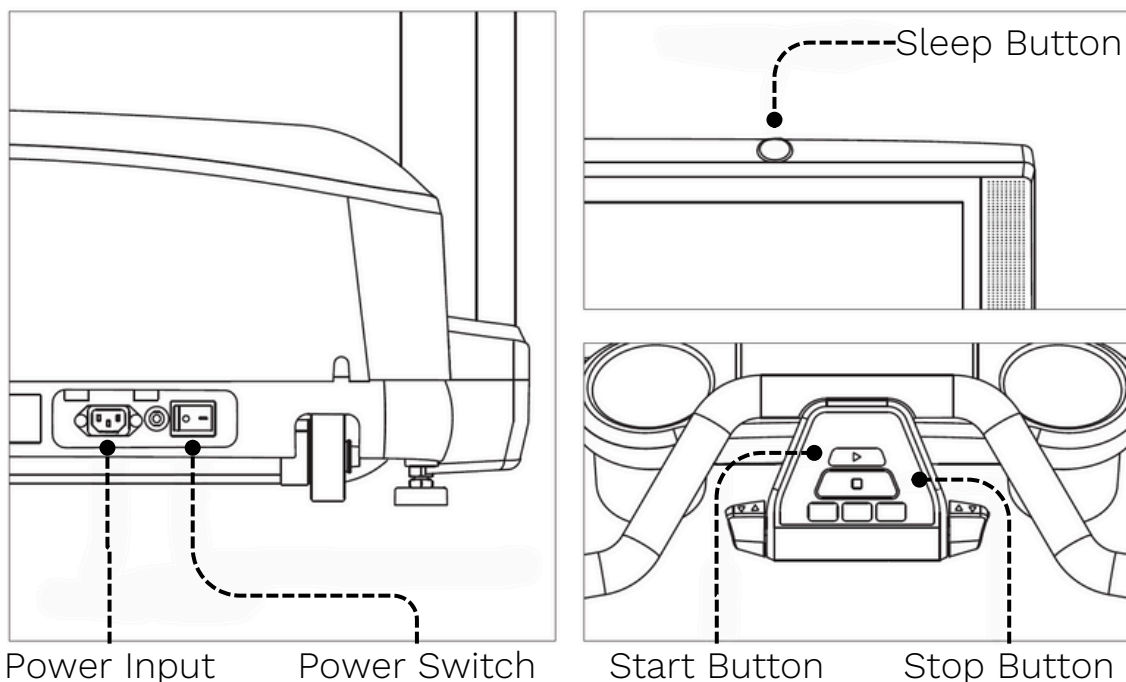
TREADMILL USAGE AND BEST PRACTICES

Plugging In and Powering On

1. Connect the power cord to the treadmill's Power Input and a nearby power outlet. Do not use extension cords.
2. Set the Power Switch to the (I) position to turn it on; the console will activate automatically.
 - a. If the treadmill has been idle for several hours, press the Sleep Button located at the top of the console to wake it up.

Powering Off

1. To stop the running surface while in motion, press the Stop Button (the red button on the Control Panel).
 - a. Ensure proper workout exit by hitting the Return key on the console and continue until you reach the Main Screen.
2. Once you are back at the Main Screen, press the Sleep Button located at the top of the console to turn it off.
3. Finally, switch off the treadmill completely using the main power switch.

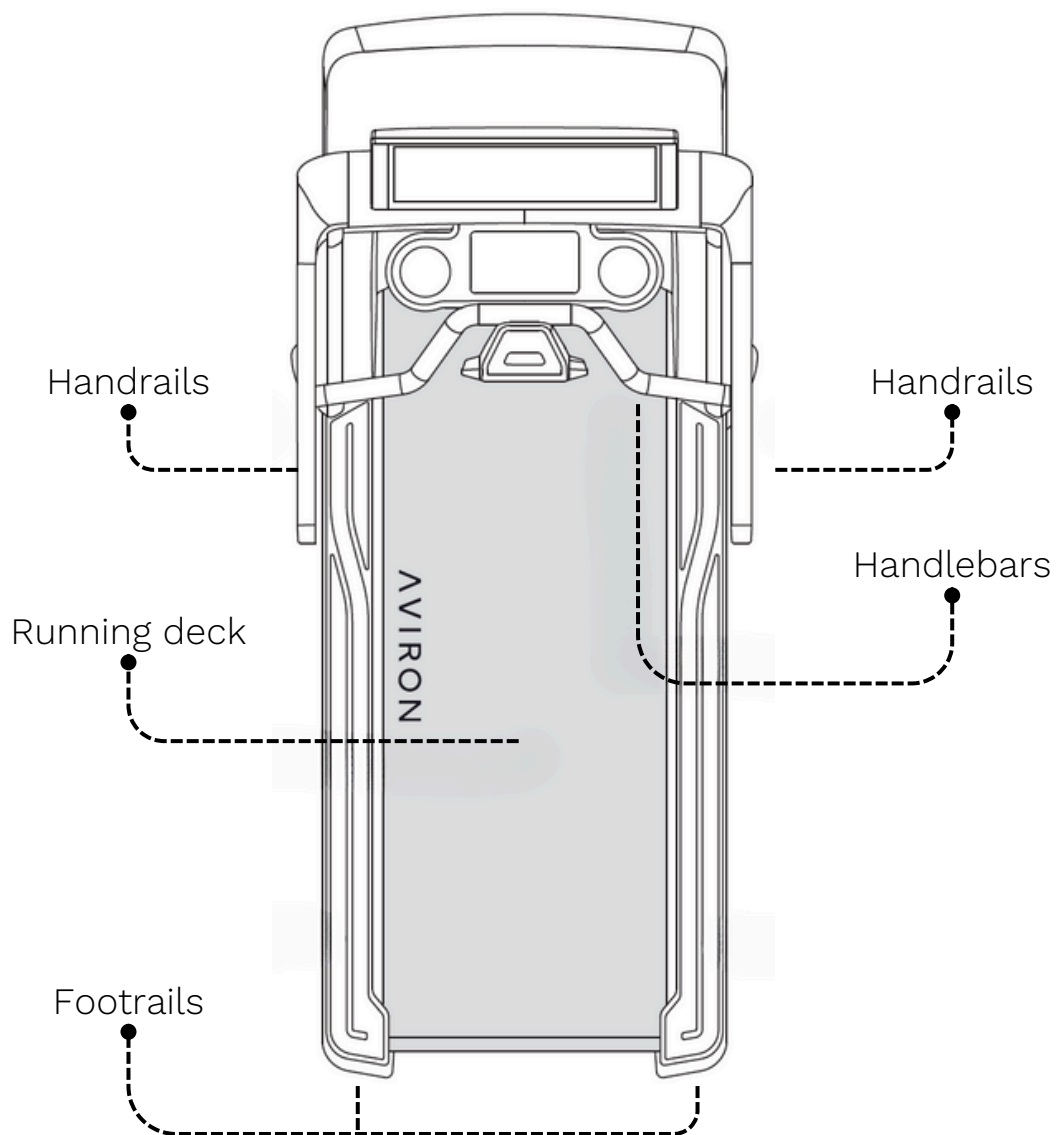


TREADMILL USAGE AND BEST PRACTICES

Stepping On

- Do not start the treadmill before stepping onto the running deck.
- Approach from the rear and use the handrails for support as you step on.
- If you need to rest, place your feet on the footrails. They provide a quick and safe way to stop running.

⚠ CAUTION: Avoid placing your full weight on the handrails.



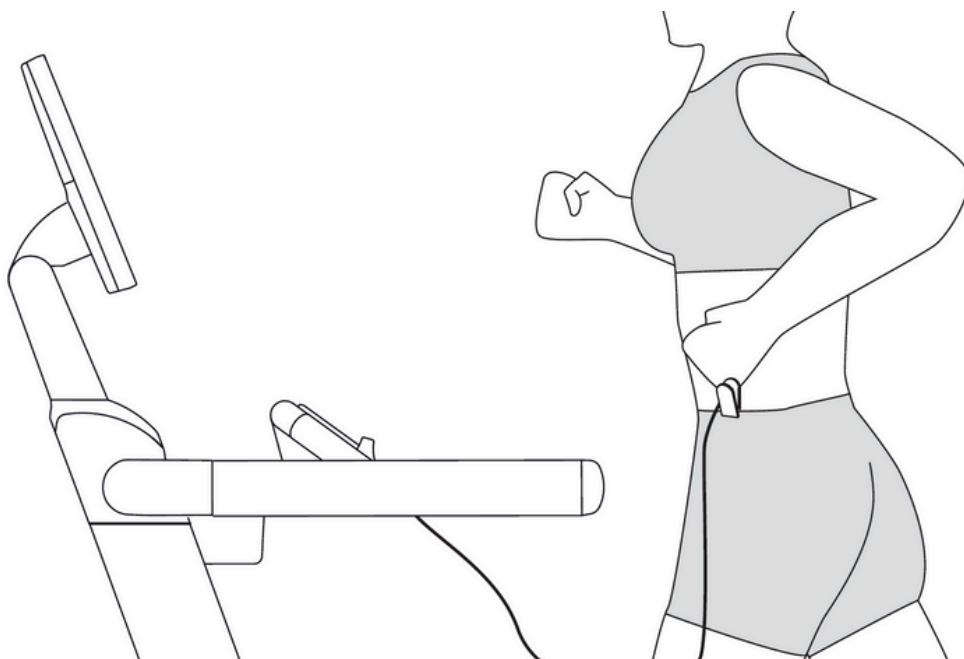
TREADMILL USAGE AND BEST PRACTICES

Safety Key

NOTE: The treadmill is designed to operate only when the safety key is fully engaged. The safety key disengages the electronic connection but cannot be detached from the Control Panel.

⚠ CAUTION: Do not attempt detaching the safety key from the Control Panel or tampering this safety device.

- The safety key is located beneath the Control Panel.
- Always ensure it is engaged before using the treadmill.
- Before starting your workout, securely clip the safety key to tight-fitting clothing to ensure it remains attached during exercise.
- In the event of a fall, the safety key will immediately stop the running belt, halting the treadmill and locking it for your safety.
- The treadmill will remain disabled until the safety key is re-engaged.
- To resume your workout, re-engage the safety key and press the Start button to restart the treadmill.



TREADMILL USAGE AND BEST PRACTICES

Console Controllers

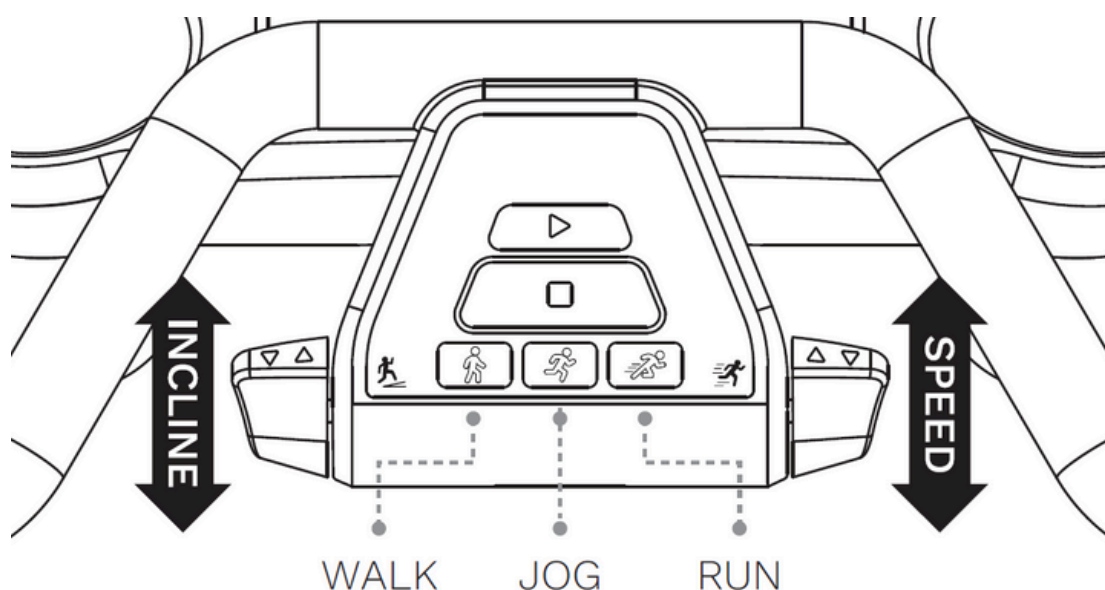
Incline Trigger: The Incline Trigger, located on the left side of the Control Panel, allows you to adjust the treadmill's incline angle. Push the trigger forward (▲) to increase or pull it back (▼) to decrease the incline. Each click changes the incline by 0.5%.

Speed Trigger: The Speed Trigger, located on the right side of the Control Panel, allows you to adjust the treadmill's belt speed. Push the trigger forward (▲) to increase or pull it back (▼) to decrease the speed.

- Short press: Changes the speed by increments of 0.1 MPH or KPH
- Long press: Changes the speed by increments of 0.5 MPH or KPH

Preset Speeds: The Victory treadmill is equipped with three preset speed options, designed to help you quickly adjust your workout intensity.

- Walk: Sets the speed to 2 MPH (3 KPH)
- Jog: Sets the speed to 4 MPH (6 KPH)
- Run: Sets the speed to 6 MPH (9 KPH)



CARE AND MAINTENANCE

CAUTION:

- To ensure safe operation and optimal treadmill performance, regularly check for wear or any damage, and perform minor maintenance procedures (see list below).
- Replace any damaged or defective parts immediately, and do not use the treadmill until repairs are completed.
- Use only original manufacturer parts. Unauthorized changes or modifications will void the warranty.
- Always power off and unplug the treadmill before cleaning or performing maintenance.
- Any service beyond the described procedures must be performed by an authorized technician.

Cleaning the Treadmill

Regular cleaning is essential to maintain the treadmill's performance and extend its lifespan. Follow these guidelines for safe and effective cleaning:

1. Wipe down all surfaces using a damp cloth and mild, soapy water.
 - a. Clean and disinfect the handrails and handlebars with alcohol-free and ammonia-free solutions.
2. DO NOT use abrasive cleaners, as they can damage the treadmill.
3. DO NOT spray or pour liquids directly onto the treadmill surfaces.
4. DO NOT allow any liquids to drip into the treadmill's openings or components.

CARE AND MAINTENANCE

Maintenance Schedule - Daily

Cat.	Description	Before Workout	After Workout
INSPECT	Signs of wear or damage	•	
	All screws are tightened if needed	•	
	Firmware and software updates	•	
	Treadmill's stability and leveling	•	
	Obstructions around and underneath the treadmill	•	
CLEAN	Console		•
	Running belt		•
	Handrails and handlebars		•

Maintenance Schedule - Weekly/Monthly

Cat.	Description	Weekly	Monthly
INSPECT	Signs of wear or damage		•
	Power cord	•	
	Running belt position		•
CLEAN	Treadmill surface	•	
	Area underneath the treadmill	•	
TEST	Running belt tension		•
	Safety Key functionality		•

Refer to the next page for detailed instructions on performing inspections and tests.

CARE AND MAINTENANCE

Safety Key Functionality Test

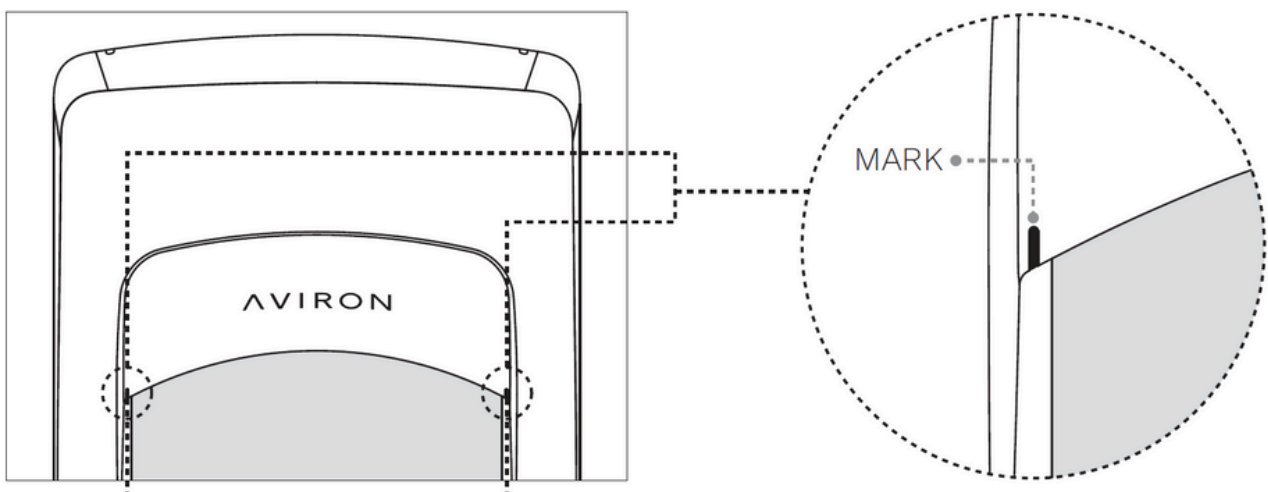
1. Power on the treadmill and log in to any profile.
2. Launch the Metrics Monitor (Quick Start).
3. Set the treadmill to any speed other than the default starting speed.
4. Pull out the safety key.

Running Belt - Tension Test

1. Power on the treadmill and log in to any profile.
2. Launch the Metrics Monitor (Quick Start).
3. Set to the jog or run speed.
4. Perform the belt slippage test by jogging or running on the treadmill and checking if the belt shifts forward or backward during use.

Running Belt - Centering Inspection

1. Power on the treadmill and log in to any profile.
2. Launch the Metrics Monitor (Quick Start).
3. Set to any speed.
4. Visually inspect if the belt is centered using the marks on the motor cover. The belt must stay between the two markings.



CARE AND MAINTENANCE

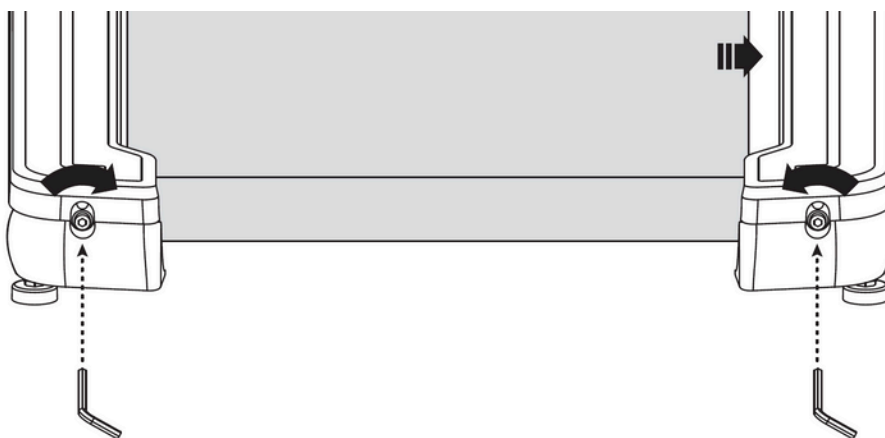
Centering / Tensioning the Running Belt

⚠ CAUTION: Always power off and unplug the treadmill before adjusting the belt.

- Use the M6 Allen Key to adjust the two screws located at the rear of the treadmill.
 - **IMPORTANT:** Never turn the screws more than 1/4 turn at a time.
- When centering the running belt, tighten one side and loosen the other to prevent over-tightening.
 - **IMPORTANT:** Over-tightening the running belt can significantly reduce its lifespan.

If the running belt is too far to the left:

1. Turn the left screw 1/4 turn clockwise (to tighten).
2. Turn the right screw 1/4 turn counterclockwise (to loosen).
3. Power on the treadmill and let the belt run for 30 seconds to allow it to adjust. Do not step on the belt during this process.
4. Repeat steps 1 to 3 as needed until the running belt is centered.

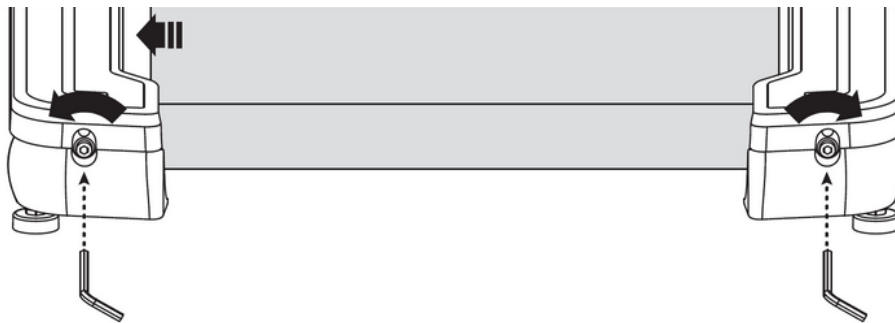


CARE AND MAINTENANCE

Centering / Tensioning the Running Belt

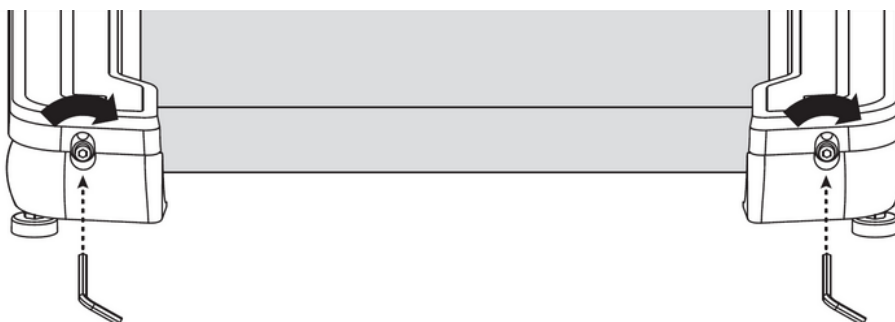
If the running belt is too far to the right:

1. Turn the right screw 1/4 turn clockwise (to tighten).
2. Turn the left screw 1/4 turn counterclockwise (to loosen).
3. Power on the treadmill and let the belt run for 30 seconds to allow it to adjust. Do not step on the belt during this process.
4. Repeat steps 1 to 3 as needed until the running belt is centered.



If the running belt is too loose (slippage feeling):

1. Turn each screw 1/4 turn clockwise (to tighten).
2. Power on the treadmill and let the belt run for 30 seconds to allow it to adjust. Do not step on the belt during this process.
3. Step on the running deck and lightly jog to validate whether slippage still exists.
4. Repeat steps 1 to 3 as needed until the running belt is tensioned.



TERMS AND CONDITIONS

General Policies

Aviron Interactive Inc. ("Aviron") aims to satisfy you (the "customer") completely. Plans and specifications are interpreted as required, but Aviron takes no responsibility that the information provided is suitable for the intended purpose. Aviron reserves the right to accept or refuse any order as part of its policy of continuous equipment improvement. All information supplied by Aviron is believed to be accurate, but Aviron is not liable for errors or misinterpretations.

Exclusion of incidental, consequential, and certain other damages

To the maximum extent permitted by applicable law, in no event shall Aviron or its suppliers nor anyone else involved in the production or delivery of this equipment be liable for any indirect, special, consequential, punitive, or incidental damages whatsoever (including, but not limited to, damages for loss of profits or loss of data or confidential or other information, for business interruption, loss of business information, and the like) arising out of or related to this agreement or the use or inability to use such equipment, the provision of or failure to provide support or other services, information, software, and related content through the Aviron equipment or otherwise arising out of the use of the Aviron equipment, or otherwise under or in connection with any provision of this license, even in the event of the fault, tort (including negligence), misrepresentation, strict liability, breach of contract or breach of warranty of Aviron or any supplier, and even if Aviron has been advised of the possibility of such damages. In no event shall Aviron's liability hereunder, if any, exceed the purchase price paid by the customer for the Aviron equipment.

WARRANTY

Warranty is applicable to factory and certified dealer repairs unless approved by Aviron. All equipment and parts in need of servicing must be repaired by a certified dealer or be shipped back to Aviron at the customer's expense to comply with the Aviron Limited Warranty unless approved by Aviron. Aviron is not required to provide the customer with a substitute during the warranty period or at any time. The equipment is automatically registered after activating it on the Aviron network. Aviron will not be responsible for dismantling, reassembly or reinstallation charges.

To obtain service you must:

- Contact our support department if you are having trouble with your equipment. Aviron equipment or parts may not be returned without written permission from Aviron.
- Arrange for delivery of your Aviron equipment or parts to Aviron's premises.
- All shipments must be shipped prepaid, insured, and properly packaged, preferably in the original packaging and accompanied by a letter outlining the defect.

For further information, please visit our website:

www.avironactive.com/support/general/warranty/

Conformity Certifications



FCC Warning Statement

Changes or modifications not expressly approved by the party responsible for compliance could void the user's authority to operate the equipment. This equipment has been tested and found to comply with the limits for a Class B digital device, pursuant to Part 15 of the FCC Rules. These limits are designed to provide reasonable protection against harmful interference in a residential installation. This equipment generates uses and can radiate radio frequency energy and, if not installed and used in accordance with the instructions, may cause harmful interference to radio communications. However, there is no guarantee that interference will not occur in a particular installation. If this equipment does cause harmful interference to radio or television reception, which can be determined by turning the equipment off and on, the user is encouraged to try to correct the interference by one or more of the following measures:

- Reorient or relocate the receiving antenna.
- Increase the separation between the equipment and the receiver.
- Connect the equipment to an outlet on a circuit different from that to which the receiver is connected.
- Consult the dealer or an experienced radio/TV technician for help.


This device complies with part 15 of the FCC Rules. Operation is subject to the following two conditions:

- 1.This device may not cause harmful interference.
- 2.This device must accept any interference received, including interference that may cause undesired operation.

The device has been evaluated to meet general RF exposure requirements. The device can be used in portable exposure conditions without restriction.

UL 4200a-23 Notice

This product contains non-replacement batteries. The battery type is MS621 Lithium with a nominal voltage of 3V. Please follow the local regulations for properly disposing of used batteries, ensuring recycling or disposal. Keep away from children. Do not dispose of batteries in household trash or incinerate them. Used batteries have the potential to cause severe injury or even death. If needed, please contact your local poison control center for information on treatment. Avoid forcing discharge, recharge, disassembly, or exposure to heat exceeding the manufacturer's specified temperature rating. Doing so could lead to injury from venting, leakage, or explosion, resulting in chemical burns. Non-rechargeable batteries are not to be recharged.

⚠ WARNING	
<ul style="list-style-type: none">• INGESTION HAZARD : This product contains a button cell or coin battery.• DEATH or serious injury can occur if ingested.• A swallowed button cell or coin battery can cause Internal Chemical Burns in as little as 2 hours.• KEEP new and used batteries OUT OF REACH of CHILDREN.• Seek immediate medical attention if a battery is suspected to be swallowed or inserted inside any part of the body.• The product contains non-replaceable batteries.• Battery type : MS621FE FL11E Nominal voltage : 3.0V	

IC Warning:

This device contains license-exempt transmitter(s)/receiver(s)/ that comply with Innovation, Science, and Economic Development Canada's license-exempt RSS(s). Operation is subject to the following two conditions:

- This device may not cause interference and
- This device must accept any interference, including interference that may cause undesired operation of the device.

Radiation Exposure: This equipment complies with Canadian radiation exposure limits set forth for an uncontrolled environment; To maintain compliance with IC's RF Exposure guidelines, This device and its antenna(s) must not be co-located or operated in conjunction with any other antenna or transmitter.

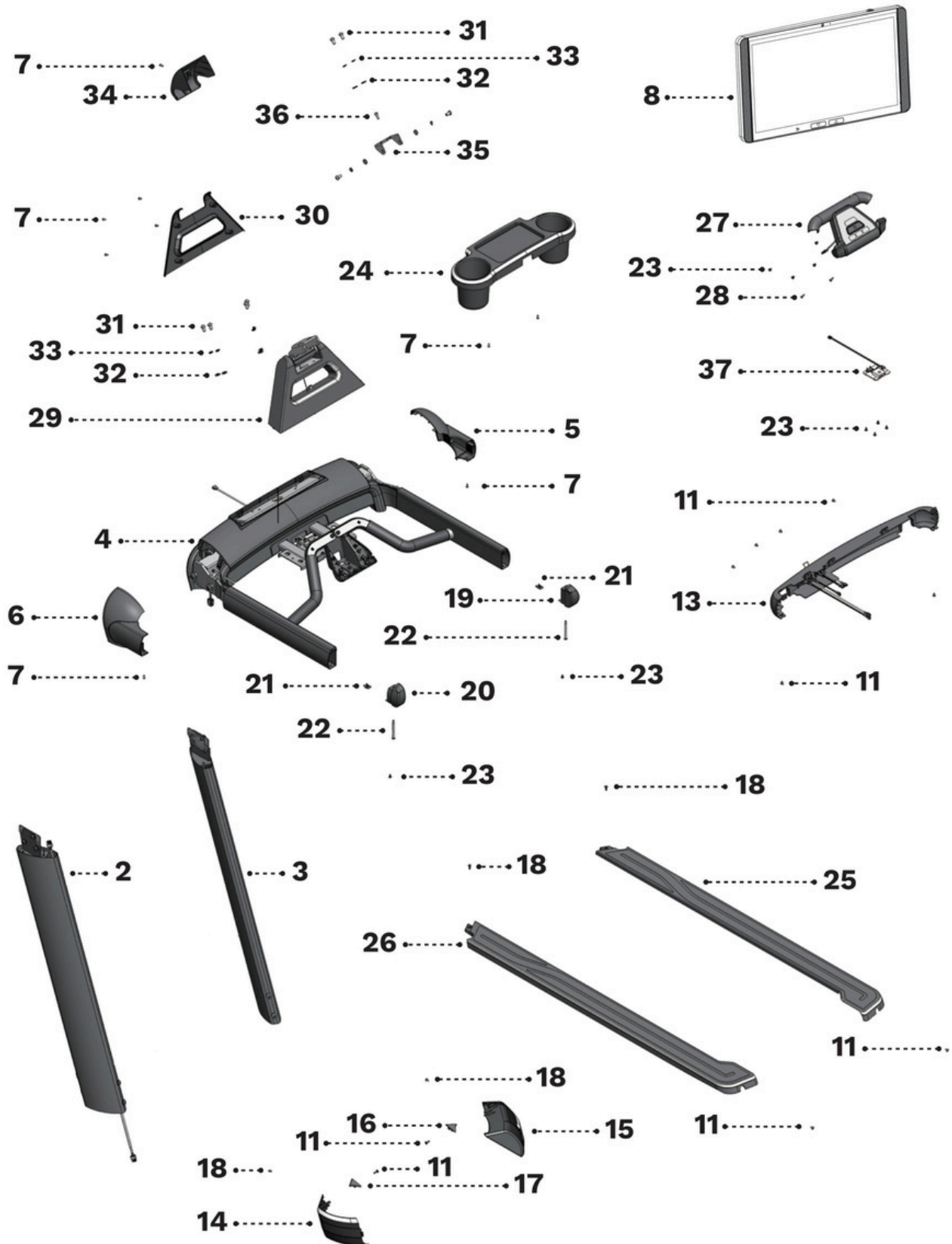
Déclaration de l'ISED Canada:

Cet appareil contient des émetteurs/récepteurs exempts de licence conformes aux RSS exempts de licence d'Innovation, Sciences et Développement économique Canada. L'opération est soumise aux deux conditions suivantes:

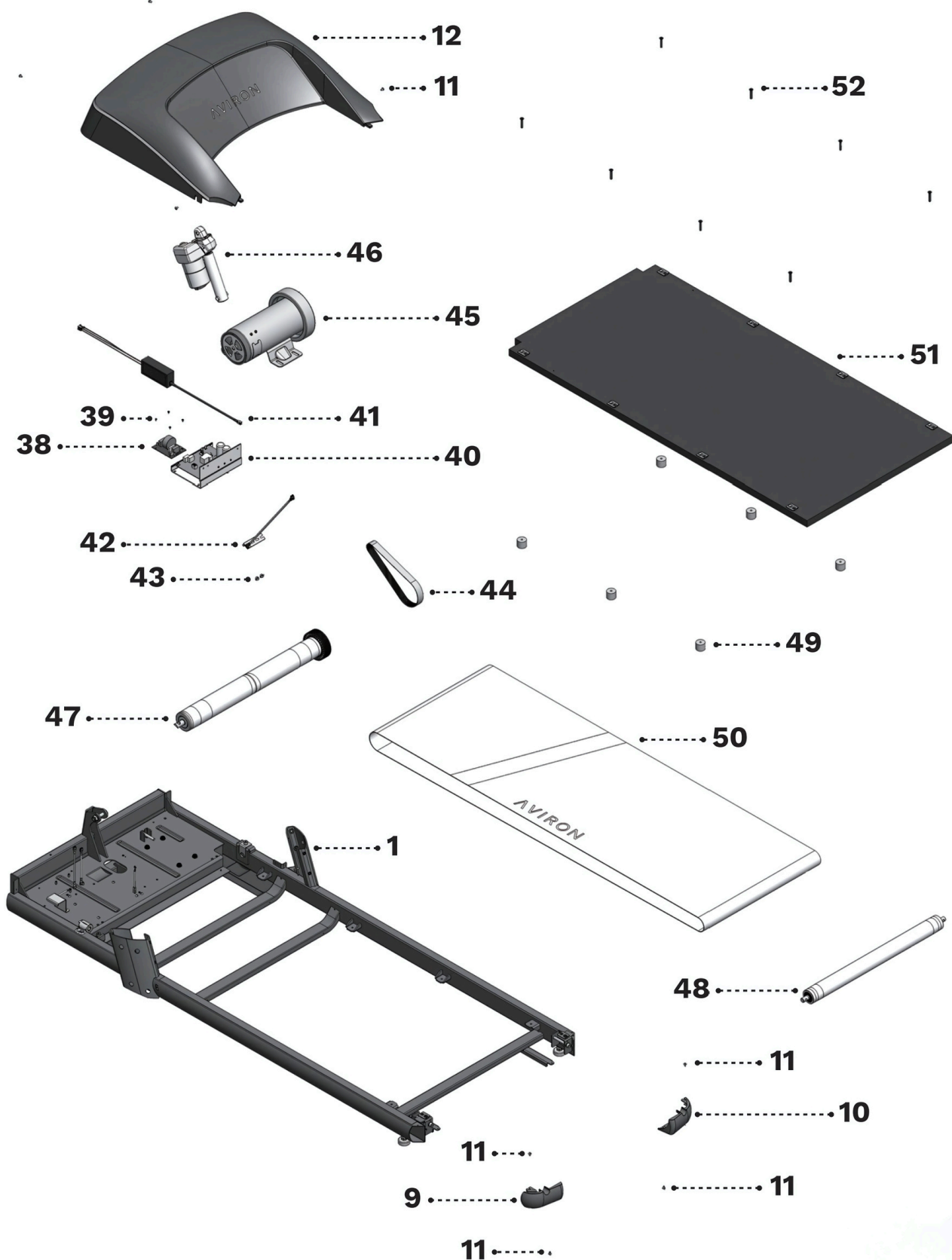
- Cet appareil ne doit pas causer d'interférences et
- Cet appareil doit accepter toute interférence, y compris les interférences pouvant provoquer un fonctionnement indésirable de l'appareil.

Exposition Aux Radiations: Cet équipement est conforme aux limites d'exposition aux radiations du Canada pour un environnement non contrôlé. Pour maintenir la conformité aux directives d'exposition RF d'IC, cet appareil et ses antennes ne doivent pas être co-localisés ou utilisés conjointement avec une autre antenne ou un autre émetteur.

EXPLODED DIAGRAM & PARTS LIST



EXPLODED DIAGRAM & PARTS LIST



EXPLODED DIAGRAM & PARTS LIST

#	PART NAME	#	PART NAME
1	BASE UNIT	27	CONTROL PANEL
2	LEFT UPRIGHT POST (W/ CABLE)	28	PHILLIPS SCREW M4 X 16MM
3	RIGHT UPRIGHT POST	29	CONSOLE BRACKET
4	CONSOLE BASE	30	CONSOLE BRACKET COVER
5	RIGHT CONSOLE COVER	31	DOME HEAD SCREW
6	LEFT CONSOLE COVER	32	FLAT WASHER M8 X 1.6T
7	BUTTON HEAD HEX SCREW M4 X 10MM	33	LOCK WASHER M8 X 1.5T
8	CONSOLE	34	CONSOLE BRACKET TOP COVER
9	LEFT FOOTRAIL END CAP	35	CONSOLE FIXING BRACKET
10	RIGHT FOOTRAIL END CAP	36	BUTTON HEAD HEX SCREW M6 X 10MM
11	BUTTON HEAD HEX SCREW M4 X 8MM	37	SAFETY KEY
12	MOTOR COVER	38	FILTER
13	POWER INLET BRACKET	39	PHILLIPS SCREW M3 X 6MM
14	LEFT UPRIGHT POST BASE COVER	40	MAIN CONTROL BOARD
15	RIGHT UPRIGHT POST BASE COVER	41	POWER SUPPLY 12V 5A 60W
16	RIGHT FRAME BASE COVER	42	SPEED SENSOR
17	LEFT FRAME BASE COVER	43	BUTTON HEAD HEX SCREW M5 X 10MM
18	BUTTON HEAD HEX SCREW M4 X 15MM	44	DRIVE BELT
19	RIGHT HANDRAIL END CAP	45	DRIVE MOTOR 3.5 CHP 90V
20	LEFT HANDRAIL END CAP	46	INCLINE MOTOR
21	CLIP NUT	47	FRONT ROLLER
22	DOME HEAD HEX SCREW M5 X 69MM	48	REAR ROLLER
23	BUTTON HEAD HEX SCREW M4 X 10MM	49	DECK CUSHION
24	BOTTLE/PHONE HOLDER	50	RUNNING BELT
25	RIGHT FOOTRAIL	51	RUNNING DECK
26	LEFT FOOTRAIL	52	COUNTERSUNK SCREW M6 X 35MM

ENDING BORING WORKOUTS



Aviron Active

265 Bartley Drive
Toronto, Ontario
M4A 2N7, Canada

avironactive.com

Phone: 877-955-4222

General email: hello@avironactive.com

Support email: support@avironactive.com

Rev. 20250317